



Volume XLI, No 1  
January 2015

Olympia Genealogical Society

# Quarterly



The Olympia Genealogical Society continued its 40th Anniversary celebrations at its September and October meetings, with President Eileen Dodge presenting purple “Special Life Member” pins to Roger Newman and Jerri McCoy. (Story, Page 4)

Olympia

Washington

## SOCIETY OFFICERS AND COMMITTEES

President .....	C. Eileen Dodge
Vice-President .....	Peggy Cooley
Secretary .....	Kathy Erlandson
Treasurer .....	Jim Haran
Past President .....	Roger H. Newman
Beginners Workshop / Education .....	Ann Olson
Genealogy Cafe .....	Norman Dodge
Gifts & Memorials .....	Jean Laws
Historian .....	Cassie Simpson
Library Liaison .....	Sara Pete
Membership .....	Pat Harper
Publications	
Bulletin Exchanges .....	Jean Laws
Newsletter Editor .....	Pat Harper
Publication Sales .....	Jerri McCoy
Quarterly Editor .....	Dick Moody
Publicity .....	Joyce Ogden
Refreshments .....	Diana Bargmann
Research .....	Members at Large
Seminar .....	Peggy Cooley
Sunshine / Hospitality .....	Gayle Strom
Website .....	Jerri McCoy

### ABOUT THE OLYMPIA GENEALOGICAL SOCIETY

**Membership:** The membership year is September 1 - August 31. Single membership is \$20 per year, a family membership (one newsletter) is \$25 per year. The Application for Membership is on page 55 in this issue of the Quarterly.

**Meetings:** The Olympia Genealogy Society meets the 2nd Thursday of the month from September to June at 7 p.m. at the Thurston County Courthouse. Everyone interested is welcome to attend. Meeting topics are posted on the Society website:

<http://www.rootsweb.com/~waogs/>

**Quarterly:** Articles and information for the Quarterly should be submitted to the editor by the 15th of the month prior to publication. Email material to Dick Moody at [dickmoody@q.com](mailto:dickmoody@q.com) or mail to Quarterly Editor, Olympia Genealogy Society, P.O. Box 1313, Olympia, WA 98507-1313.

Quarterly Publication	Quarterly Deadline
January	December 15
April	March 15
July	June 15
October	September 15

**OLYMPIA GENEALOGICAL SOCIETY**

Founded 1974

P.O. Box 1313

Olympia, WA 98507-1313

<http://www.rootsweb.com/~waogs/>email: [OlympiaGenSoc@bigfoot.com](mailto:OlympiaGenSoc@bigfoot.com)

Dues: Single \$20/Year - Family \$25/year

QUARTERLY published: January, April, July, and October - Dick Moody, Editor  
 Vol. XL No. 4 October 2014

**TABLE OF CONTENTS**

Society Officers and Committees _____	1
About the Olympia Genealogical Society _____	1
OGS President's Message from Eileen Dodge _____	3
Olympia Genealogical Society honors Jerri McCoy, Roger Newman with life memberships _____	4
In Memorium Dexter Edge Jr. _____	4
Family Interview Tips & Sample Questions _____	5
Exchange Notes _____	7
New books at the Olympia Timberland Library _____	10
Coming events of genealogical interest _____	11
Save the date for OGS' Spring Seminar: March 28, 2015 _____	12
Olympia City Directory 1925 _____	13
Nancy Neville;s 4-Generation Chart _____	30
Lin Watson nee Eakin's 4-Generation Chart _____	31
Olympia Genealogical Society membership application/renewal _____	32
Genealogist's Code of Ethics _____	Back Cover

## OGS President's Message from Eileen Dodge

Hello everyone!

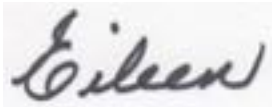
My New Year's resolution for 2015 is simple: Get all the information down before it is too late!

What is your resolution for 2015?

Every life is important. So start with paper or computer, and write a full account of your life. Then, write a full account of your parents. Follow that by as full an account as possible of your grandparents, even if the details are only fragments.

Use video cameras (with a tripod as necessary) and voice recorders if possible. Interview every family member, especially your elders. Getting people to share their stories isn't always easy to do, but by asking open-ended questions you are sure to collect a wealth of family lore.

On the following pages of this issue of the Olympia Genealogical Society Quarterly you will find suggested questions to spark your memory and help you focus on the task of a personal interview.

A handwritten signature in cursive script that reads "Eileen". The signature is written in dark ink on a light-colored background.

Eileen Dodge  
OGS President

## Olympia Genealogical Society honors Jerri McCoy, Roger Newman with life memberships

Two former presidents of the Olympia Genealogical Society were honored this fall with Lifetime Memberships by current President Eileen Dodge. Jerri McCoy was honored in October. Roger Newman was honored in November.

President Dodge presented each with a special OGS Purple Lifetime Membership pin and highlighted their volunteer contributions to advance genealogy regionally, statewide, and nationally.

McCoy and Newman join six other Society members honored with Lifetime Memberships during the Society's 40th Anniversary. The previous memberships were presented in September to David and Karen Purtee, founding member Ann Olson, Ed Swan, Jean Laws, and Pat Harper.

In presenting the award to McCoy in October, Dodge said McCoy joined the OGS in 1980 and has contributed considerable time and energy to the organization. McCoy has:

- served as OGS vice president under Alma Greenwood in 1993 and 1994
- served as OGS president in 1984 and 1985
- chaired and taught the Computer Interest Group for 18 years
- was the OGS Quarterly editor for 9 years
- served as a Washington State Genealogical Society delegate in 1988 and 1989
- has been in charge of OGS publication sales since 2003
- serves as OGS webmaster
- and, "has been an integral part of the Beginner's Workshop team for more years than anyone can remember.

In presenting the award to Newman, Dodge said he joined the Society in 1986 and has:

- twice governed as president, first from 1995-1997 and again from 2011-2013
- was Spring Seminar chair for several years
- currently coordinates the vendors for the Spring Seminar
- served as OGS treasurer for a number of years
- was the Research Committee chair for many years and continues today to assist whenever needed
- is a faithful contributor to the twice monthly Genealogy Cafe, helping others with their genealogy research
- Newman is also active with the Washington State Genealogy Society as a member of its Board of Directors.

### **In Memorium Dexter Edge Jr.**

Longtime Olympia Genealogical Society member Dexter Edge Jr. died October 15, 2015 at his home at Panorama. He was 92 years old. He was last listed as a member in the 2008-2008 directory.

## Family Interview Tips & Sample Questions

Olympia Genealogical Society General Meeting

January 10, 2013

Presented by Eileen Dodge

A great way to uncover clues to your family history is to get great quotes for journaling in a heritage scrapbook is a family interview. Getting people to share their stories isn't always easy. Follow these step-by-step ideas for a successful family history interview!

1. Schedule a time in advance. This gives everyone a chance to prepare.
2. Prepare a list of questions beforehand and either share them with your relative, or give them an idea of what you want to cover.
3. Bring several notepads and pens to the interview. If you plan to make a recording, be sure to have a tape player, microphone, extra tapes and batteries.
4. Take good notes and make sure you record your name, the date, the place the interview is being conducted and the interviewee.
5. Start with a question or topic that you know will elicit a reply, such as a story you have heard her tell in the past.
6. Ask questions which encourage more than simple 'yes' or 'no' answers. Try to elicit facts, feelings, stories and descriptions.
7. Show interest. Take an active part in the dialogue without dominating it. Learn to be a creative listener.
8. Use props whenever possible. Old photographs, favorite old songs and treasured items may bring memories flooding back.
9. Don't push for answers. Your relative may not wish to speak ill of the dead or may have other reasons for not wanting to share. Move on to something else.
10. Use your prepared questions as a guideline, but don't be afraid to let your relative go off on a tangent. They may have many things to say that you never thought to ask!
11. Don't interrupt or attempt to correct your relative; this can end an interview in a hurry!
12. When you are done, be sure to thank your relative for her time.
13. Put your relative at ease by telling them that they will have a chance to see and approve of anything that you write before you share it with others.
14. Keep the interview length to no more than 1-2 hours at a stretch. It's tiring for you and for the person being interviewed. This is supposed to be fun!
15. Consider preparing a transcript or written report as a tangible thank you to your relative for their participation.

By asking the right, open-ended questions, you're sure to collect a wealth of family tales. Use this list of family history interview questions to help you get started, but be sure to personalize the interview with your own questions as well.

1. What is your full name? Why did your parents select this name for you? Did you have a nickname?
2. When and where were you born?

(Continued on Page 6)

## Family Interview Tips & Sample Questions

(Continued from Page 5)

3. How did your family come to live there?
4. Were there other family members in the area? Who?
5. What was the house (apartment, farm, etc.) like? How many rooms? Bathrooms? Did it have electricity? Indoor plumbing? Telephones?
6. Were there any special items in the house that you remember?
7. What is your earliest childhood memory?
8. Describe the personalities of your family members.
9. What kind of games did you play growing up?
10. What was your favorite toy and why?
11. What was your favorite thing to do for fun (movies, beach, etc.)?
12. Did you have family chores? What were they? Which was your least favorite?
13. Did you receive an allowance? How much? Did you save your money or spend it?
14. What was school like for you as a child? What were your best and worst subjects? Where did you attend grade school? High school? College?
15. What school activities and sports did you participate in?
16. Do you remember any fads from your youth? Popular hairstyles? Clothes?
17. Who were your childhood heroes?
18. What were your favorite songs and music?
19. Did you have any pets? If so, what kind and what were their names?
20. What was your religion growing up? What church, if any, did you attend?
21. Were you ever mentioned in a newspaper?
22. Who were your friends when you were growing up?
23. What world events had the most impact on you while you were growing up? Did any of them personally affect your family?
24. Describe a typical family dinner. Did you all eat together as a family? Who did the cooking? What were your favorite foods?
25. How were holidays (birthdays, Christmas, etc.) celebrated in your family? Did your family have special traditions?
26. How is the world today different from what it was like when you were a child?
27. Who was the oldest relative you remember as a child? What do you remember about them?
28. What do you know about your family surname?
29. Is there a naming tradition in your family, such as always giving the firstborn son the name of his paternal grandfather?
30. What stories have come down to you about your parents? Grandparents? More distant ancestors?
31. Are there any stories about famous or infamous relatives in your family?
32. Have any recipes been passed down to you from family members?
33. Are there any physical characteristics that run in your family?
34. Are there any special heirlooms, photos, bibles or other memorabilia that have been passed down in your family?
35. What was the full name of your spouse? Siblings? Parents?

(Continued on Page 7)

## Family Interview Tips & Sample Questions

(Continued from Page 6)

36. When and how did you meet your spouse? What did you do on dates?
37. What was it like when you proposed (or were proposed to)? Where and when did it happen? How did you feel?
38. Where and when did you get married?
39. What memory stands out the most from your wedding day?
40. How would you describe your spouse? What do (did) you admire most about them?
41. What do you believe is the key to a successful marriage?
42. How did you find out you were going to be a parent for the first time?
43. Why did you choose your children's names?
44. What was your proudest moment as a parent?
45. What did your family enjoy doing together?
46. What was your profession and how did you choose it?
47. If you could have had any other profession what would it have been? Why wasn't it your first choice?
48. Of all the things you learned from your parents, which do you feel was the most valuable?
49. What accomplishments were you the most proud of?
50. What is the one thing you most want people to remember about you?

## Exchange notes

**Jean Laws, Editor**

*The publications mentioned are sent to the Olympia Genealogical Society. They are filed alphabetically by state and county in the vertical files in the file cabinets in the genealogical section of the Olympia Timberland Library. The Olympia Genealogical Society Quarterly is bound and is also held in the genealogical section. Older bound volumes of other genealogical societies are held in storage at the Timberland Regional Library headquarters and Montesano Timberland Library. These may be requested at the Information/Reference Desk of your Timberland Library.*

### **Chelan Valley Genealogical Society, September 2014**

This issue includes a long article on the U.S. census and sources for the records online. It tells what is available, whether it is free or requires payment, and what is included in each census. You may learn some new sources to check.

### **Ft. Worth Genealogical Society, TX, Footprints, August 2014**

This issue includes sketches on Civil War Veterans of Northeast Tarrant County. It is a great read of information on each of these individuals.

### **Ft. Worth Genealogical Society, TX, Footprints, November 2014**

This issue includes many Tarrant County records such as marriages 1905. There is also a timely article on Oral History. This is a guide you might want to use with questions that could help you interview relatives.

(Continued on Page 8)

## **Exchange notes**

(Continued from Page 7)

### **Genealogical Society of Southwest Pennsylvania, Washington, PA, Fall 2014**

Did you know the first cremation in U.S. took place in Washington County, Pennsylvania in 1876? A follow article on the famous Le Moyne Crematory was closed for general use in 1910. This issue also includes an extensive article on African American Heritage and how it can be researched. It can be done!

### **Genealogical Society of Southwest Pennsylvania, Washington, PA, Summer 2014**

This issue includes lots of excerpts from Daily Notes from Canonsburg, Pennsylvania. For a sampling: Sheep claims paid May 12, 1916 and, a list of names and amount of money paid by the County Commission. I wonder for what? Also included, an ancient burying ground, the April 12, 1889 Rambles in Hill Church Graveyard and some epitaphs, and Radio Programs of April 12, 1943. Do you remember the Great Gildersleeve, Gabriel Heater, or I love a Mystery? I do.

### **Milwaukee County Genealogical Society, WI, November 2014**

This issue has more hidden treasures in the Milwaukee Public library. This county has a number of ethnic groups interested in genealogy and news of them is in each issue. Some prominent articles in this issue include Mexican, Italian and German roots.

### **Minnesota Genealogical Society, St. Paul, MN, Vol 45 No 2**

This issue consists of several articles to help us solve some riddles. One author came to a brick wall with the surname Suddarth in Kentucky and finally feels he has the answer using DNA. He believes the father of his Lewis Suddarth had a different surname and that Suddarth was the mother's name instead. Another article reminds us to check every census especially when information is inconsistent. And for you researchers with roots in Norway, there is information in a registration of marriage of a Norwegian couple in La Cross County, Wisconsin that shows much more info than a marriage license. It is something to check out.

### **Oklahoma Genealogical Society, Oklahoma City, OK, September 2015**

Several good articles as usual as well as genealogical stories are included in this issue. An article on research challenges tells us to concentrate on the facts and presents a new approach which may help. Also, some information on the Homestead Acts of 1862 and 1866 may have information you can use, as they are good sources of information.

### **Puget Sound Genealogical Society, October - January 2014**

This issue is full of good stories on searches, ancestors, and brick walls. One is on the fact that many genealogists believe they have native American ancestry. The author couldn't prove her story but is still trying. and gives her sources. The TV series "Finding your Roots" claims that most of these stories are not true, based on DNA evidence, it states there are no Cherokee Princesses.

(Continued on Page 9)

## **Exchange notes**

(Continued from Page 8)

### **South King County Genealogical Society News, July - September 2014**

Lots of goodies are included now that this is a quarterly instead of a monthly publication. Read thinking outside the box, and finding more information on that Civil War ancestor, to name a couple. The president of this society has some good thoughts on how to attract new members. Some ideas are a grandmother granddaughter tea, sharing local family discoveries on You Tube, and a fashion show of vintage clothing.

### **South King County Genealogical Society News, October - December 2014**

If you are researching in King County, The King County Archives should be able to help. A list of other resources are listed and King County Court Cases 1881-1980 are being indexed by Seattle Genealogical Society. Read the article on this huge King County database which is available now.

### **Southeast Washington Genealogical Society, October 2014**

Do you think all your genealogy is on the Internet? Have you tried a trip to Salt Lake library? A long article in this issue tells you everything you need to know from how to get there, where to stay, what the library has and much more. This is a timely follow up to Jerri McCoy's talk at the Olympia Genealogical Society's December meeting.

### **Crawford County Genealogical Society, Pittsburg, KS, November 2014**

Due to rising costs of ink, paper, and mailing, the society has decided to stop exchanging its publication, The Seeker. This is their last issue for exchanges. A number of societies are doing this so we don't receive too many anymore. If you are researching in this area, you might want to join the society. This issue has Crawford County's early settlers from biographies in the Girard Independent 1898 - 1899. Many unknown facts on this area are included in the Did You Know series.

### **Whitman Co Genealogical Society, August - September 2014**

A poignant article called Dear Zoe in this issue is about an autograph album bought at a garage sale. The author became interested in Zoe Davenport and found much about her life and that she was a niece of John Colver Davenport who founded Davenport WA and cousin of Llewellyn Davenport who started the Davenport Hotel in Spokane. We all get curious about other families.

### **Whitman County Genealogical Society, October - November 2014**

This article continues with stories of Early Pioneers of Whitman County by Fred Yoder. This issue features J.D. Butler of Pine City and James Benson of St John. Also featured an essay "A Land Grant Heritage Iowa to the Palouse" with pictures of quilts by the author.

(Continued on Page 10)

## **New books at the Olympia Timberland Library**

Library Liaison: Sara Pete  
[spete@trlib.org](mailto:spete@trlib.org)



Recent genealogical additions to the Olympia Timberland Library include the following:

- Tracing your East End ancestors / Cox, Jane, 1942 - ebook added in November.
- Finding your roots [electronic resource] / Gates, Henry Louis, Jr. Streaming video added in September.
- Finding your roots: the official companion to the PBS series / Gates, Henry Louis, Jr. added in September.

## **Exchange notes**

(Continued from Page 9)

### **Yakima County Genealogical Society December 2014**

This issue includes many book reviews from this society's extensive library and a list of new acquisitions. Visit this sometime when you are in the vicinity. It is located at 1901 S 12th Ave, Union Gap, and hours are Mon-Sat 10-4

### **Yakima County Genealogical Society, September 2014**

Many local items from A Mess of Potpourri from 1891 are included in this issue. My favorite is J.M. Brown up from Horse Heaven Ranch. He reports a joyful Thanksgiving at his house. His first cause of thanks was the advent of a little girl and his next that she wasn't a twin. These are from the Yakima Herald of November 26, 1891.

## Coming events of genealogical interest

For more information, description of workshops, registration fees, and directions on how to register for the following events please visit the sponsoring organization's website:

- Olympia Genealogy Society – <http://www.rootsweb.ancestry.com/~waogs/>
- Heritage Quest Library – <http://www.hqrl.com/eventcalendar.html>
- Puget Sound Genealogy Society – <http://www.pusogensoc.org/id9.html>
- Seattle Genealogical Society – [www.seattlegenealogicalsociety.org](http://www.seattlegenealogicalsociety.org)
- Tacoma-Pierce County Genealogical Society – <http://www.rootsweb.ancestry.com/~watpcgs/>
- Washington State Genealogy Society – <http://www.wasgs.org/>

### Olympia Genealogy Society Calendar:

The Olympia Genealogy Society meets the 2<sup>nd</sup> Thursday of the month, September through June, at 7 pm. Meetings are held at the Thurston County Courthouse, Building 1, Room 152, unless noted otherwise. All meetings are free unless except for the February Annual Dinner and March Spring Seminar are free. Those two annual events require advance registration as noted below.

- January 8 – “Researching your English Ancestors on the Internet” presented by Godfrey and Merry Ellis, 7 pm, Thurston County Courthouse.
- January 15 – Genealogy Café, 1-3 pm, Olympia Library Meeting Room.
- January 17 – Genealogy Café, 1-3 pm, Olympia Library Meeting Room.
- January 20 – Board of Directors, 6:30 pm, Olympia Library Meeting Room.
- February 12 – OGS Annual Dinner, River’s Edge Restaurant, Tumwater Valley. (Advance reservations required.)
- February 17 – Board of Directors, 6:30 pm, Olympia Library Meeting Room.
- February 19 – Genealogy Café, 1-3 pm, Olympia Library Meeting Room.
- February 21 – Genealogy Café, 1-3 pm, Olympia Library Meeting Room.
- March 12 – “Lineage Societies” presented by Jerri McCoy, 7 pm, Thurston County Courthouse.
- March 28 – OGS Spring Seminar, “Genealogy: The Future is Now” presented by Thomas MacEntee of High Definition Genealogy, 8 am - 4 pm, Olympia DoubleTree by Hilton Hotel. Register by March 9. Registration available at: [www.rootsweb.com/~waogs](http://www.rootsweb.com/~waogs)

### Other regional spring seminars, meetings, and workshops:

If you are traveling throughout the state, the Washington State Genealogical Society has links to local societies where you can check to see if there may be a meeting of interest when you are “in the neighborhood” see “Meetings and Events at: [www.wasgs.org](http://www.wasgs.org) .

- January 13 – Beginning Family History Research, 1 pm, Heritage Quest Library, Free. register online.
- January 13 – Using PERSI, 7 pm, Tacoma-Pierce County Genealogical Society
- January 19 – Brick Wall Solving Session, 1 pm, Seattle Genealogical Society.
- January 21 – Mangled Bible Names in Family History, Seattle Genealogical Society

(Continued on Page 12)

## Coming events of genealogical interest

(Continued from Page 11)

- January 23 — Ties that Bind - Exploring Marriage Records, 6 pm, Heritage Quest Library, \$15, register online.
- January 25 — Soldiers, Spies, & Farm Wives, 1:30 pm, Seattle Genealogical Society
- January 28 — New Year's Resolutions for Genealogy, 1 pm, Puget Sound Genealogical Society, Sylvan Way Library Genealogy Center. January 29 — Digital Keepsake, 1 pm, Heritage Quest Library, \$15, register online.
- January 31 — Using Postcard Images, 1:30 pm, Seattle Genealogical Society.
- February 1 — Conducting a House History Wherever You Live, 1 pm, Seattle Genealogy Society.
- February 9 — Placing Your Ancestor in Historical Context Using Resources at NARA, Heritage Quest Library, \$15, register online.
- February 10 — Interpreting Family Bible Records, 10 am, Seattle Genealogy Society.
- February 17 — Brick Wall Solving Session, 1 pm, Seattle Genealogy Society.
- February 25 — Evernote for Genealogy, 1 pm, Puget Sound Genealogical Society
- February 28 — Ethnic Heritage in the Northwest Series: Embracing Your Ethnic Heritage, 10:15 am; Coming to America, 1 pm. Seattle Genealogy Society.

### Save the date for OGS' Spring Seminar: March 28, 2015

**Back by membership request: Thomas MacEntee**

**Founder - High Definition Genealogy**

**Why wait until March? Start following Thomas at:**

<http://geneabloggers.com/>

<http://hackgenealogy.com/>



#### **Sessions:**

- **Genealogy - The Future is Now**
- **Google for Genealogists**
- **Social Networking: New Horizons for Genealogists**
- **After You're Gone: Future Proofing Your Genealogy Research**

**Registration information available at:**

[www.rootsweb.com/~waogs/](http://www.rootsweb.com/~waogs/)

# Olympia City Directory 1925

The following pages from the Olympia City Directory, 1925 for names beginning with the Letter B. Subsequent pages will be included in future editions of the Quarterly. The December 2014 Quarterly started the 1925 edition with the descriptive information about Olympia and the listing of names beginning with the letter A. This series started in July 2008. The original of this directory, along with other historical city directories, is located in the reference section of the Olympia Timberland Library.

Walter  
Crosby

Insurance

---

Fire  
Accident  
and  
Health

---

Plate  
Glass  
Automobile  
Steam  
Boiler  
Burglary  
and  
Liability

---

NOTARY  
PUBLIC

---

City Hall  
Telephone  
244

---

OLYMPIA

## Money's Worth or Money Back at MOTTMAN'S

(1925) R. L. POLK & CO.'S, INC.

Ashwell Roy (Carrie) tinner Martin Hdw Co h 1226 State av  
 Ashwell Thos H (Harriet) tinner 125 N Capitol way h 1064  
 Lybarger  
 Ashwill Agnes r G S Gartley  
 ASKREN WM D (Bessie F), Judge Supreme Court, h 1625  
 Water  
 Aspinwall Geo D (Cornelia A) inv h 138 Sheridan  
 Aspinwall Mark N (Gladys) pntr h 326 Foote  
 Aspinwall R C h RD1  
 Assembly of God Pentecostal N Puget and se cor Bigelow av  
 Atchinson F H h RD2  
 Atkin Meta tchr Co Sch h Yelm  
 Aubol Ole (Matilda) lab h 213 N Franklin  
 Aubol & Jacobson RD3  
 Aura Edw millwkr Olympia Veneer Co Inc r 321 5th av  
 Austin Andw J (Blanche; Mills & Austin) h 1501 4th av  
 Austin Helen student r 1501 4th av  
 Austin John A h RD1  
 Austin Jos (Florence) mech h 1424 Lybarger  
 Automobile Club of Washington Lu Ite Moor sec 522 Capitol  
 way  
**AUTOMOBILE INSURANCE CO OF HARTFORD, Insur-**  
**ance Service Corporation Agts, 208 4th Av**  
 Autrey Chas W millwkr Buchanan Lbr Co h RD1  
 Avery Addie (wid Sim S) h 915 5th av  
 Avery Gates h RD3  
 Ayer Bros dairy h RD5  
 Ayer Ellis C (Dorothy N) acct State Highway Dept h 1412  
 Langridge av  
 Ayers Earl W millwkr r 518 N Central  
 Ayers Ethel F librarian r 518 N Central  
 Ayers Geo W (Jennie) eng h 518 N Central  
 Ayers Harry A (Louise R E) printer State Printing Office h  
 RD2  
 Ayers Kenneth A student r 518 N Central -  
 Ayers Mildred C sten Capital Motors Corp r 518 N Central  
 Ayers Russell H r 518 N Central  
 Ayers Richd C h RD5  
 Ayers Travis r RD5  
 Babcock Clifford A (Marie) h 119 20th av W  
 Bach Glenn R (Stenna O) predatory animal insp U S Dept of  
 Agriculture h 1303 Central  
 Bach John C (Evaline) cashr O-WR&NRy h 1523 Union av  
 Bachman Geo J (Rose M; Olympia Foundry Co) h 1760 Bige-  
 low av  
 Bachman Minnie R millwkr Olympia Knitting Mills Inc r 1760  
 Bigelow av

---

## CAPITAL REALTY CO.

CITY PROPERTY      R. F. DOTSON      FARM LANDS

Loans—Logged Off Lands—Timber Lands

111 FIFTH AVENUE      Telephone 790      OLYMPIA, WASH.

# MUNSON for DRUGS

F. G. MUNSON DRUG CO.

124 FOURTH AVENUE Telephone 6 OLYMPIA, WASH.

OLYMPIA CITY DIRECTORY (1925)

Backlund Annie (wid Danl) h cor Harrison and Decatur  
 Backlund Frank F (Ida) millwkr Olympia Veneer Co Inc h 832 Glass  
 Backlund Obed (Cora E) carmn PSP&LCo h 1217 Jefferson  
**BACKMAN CHAS A** (Muriel W), Florist, Flowers For All Occasions, Funeral Designs 511 Washington, Tel 8, h 10 Bigelow Apts  
 Backman Richd log buyer Olympia Veneer Co Inc r 1126 5th av  
**BADER INSURANCE AGENCY** (N C Bader), Insurance in All Its Branches, 115 5th Av, Tel 194 (See right top lines)  
**BADER NEWTON C** (Clara E; Bader Insurance Agency) h 412 18th Av  
 Bading Marjorie S sten State Comnr of Pub Lands 207 Pacific bldg  
 Bahlmann Wm h RD2  
 Bailey Chas T (Anna) gard h 119 N Adams  
 Bailey Glen (Mildred) millwkr h 1302 Bowman av  
 Bailey Homer L (Mary) driver Eads Transfer h 1826 6th av  
 Bailey Sarah r 119 N Adams  
 Bailey Wm B (Ida M) chf license clk State Ins Comnr h 1504 Capitol way  
 Baker Albt F (Alice B) slsmn Buckeye Extract Co h Tumwater  
 Baker Alfreda Mrs r 517½ Capitol way  
 Baker A Clay (Opal) dep Co Clk and Court sten h 203 18th av  
 Baker Chas E (Ethel G) tchr h 1917 Capitol way  
 Baker Clara P (wid Francis E) h 2319 Capitol way  
 Baker Edw (Golda) clk Capital Cigar Store h 822 4th av  
**BAKER FEED & FUEL CO** (Virgil Baker, Nelson Vaughn, Wm Wilson), Hay, Grain and Feed, Fuel and Building Material 7th Av W and Columbia, Tel 7 (See right bottom lines)  
 Baker F C dairy h RD2  
 Baker Glenn A driver Union Oil Co r A F Baker  
 Baker Hugh porter Wm Klaumbush r 417 Capitol way  
 Baker J Albt (Rose E) acct h 714 13th av  
 Baker J M h RD3  
 Baker Kenneth M student r 203 18th av W  
 Baker Leah student r 323 11th av  
 Baker N John (Vivian) driver r 220 4th av W  
 Baker Ralph S (Helen) millwkr h 9th av and Fir  
 Baker Thos E (Maude H) telg opr NPRy h 411 Carlyon av  
 Baker Thos H (Edith) driver h 1101 N Puget  
 Baker Vena tchr McKinley Sch r6, 208 6th av  
 Baker Virgil (Hazel G; Baker Feed & Fuel Co) h 1067 Columbia  
 Baker Vivian M nurse Maxwell Maternity Hosp r 723 4th av W

120 NORTH JEFFERSON STREET

OFFICE PHONE 977

RES. PHONE 649-Y

OLYMPIA, WASH.

# HURSEY PLUMBING & HEATING CO.

33



**Who Sells It?**

IS ANSWERED BY THE CLASSIFIED BUSINESS LISTS IN THIS DIRECTORY

34

C. H. SPRINGER, Pres.

G. A. AETZEL, Vice-Pres.

# OLYMPIA DOOR CO.

Established 1897—Incorporated 1897

Manufacturers of Pacific Coast Timber Products

OLYMPIA

(1925) R. L. POLK &amp; CO.'S, INC.

Kneeland  
Hotel

J. M. Hagan  
Mgt.

PHONE  
122

Steam  
Heat

Hot and  
Cold Water

Telephones  
in All Rooms

A  
Comfortable  
Place  
Without  
Extrav-  
agance

Rates  
\$1.00 and Up  
Special Rates  
By  
Week or  
Month

Cor. 4th Av.  
and  
Capitol Way

OLYMPIA  
WASH.

Baker Volney S bellmn Olympian Hotel r 323 11th av  
Baker Wm A (Leona) h 1101 N Puget  
Baker Wm J (Mildred) janitor Dept Business Control h 1416  
10th av  
Baker Wm O (Millie) farmer h 7th av W nr Plymouth  
Bakhus Wm C plmbr G L Jones h 1617 Dickinson av  
Balch B A h RD3  
Balcom John F (Elizabeth) clk C E Howey h Wildwood Park  
RD5  
Baldwin Jos R (Florence H) tchr h 1132 6th av  
Ball Caleb S (Anna) h 110 N Turner  
Ball Geo (Laura E) h1021 San Francisco  
Ball Patk sawyer r 116 N Water -  
Ball Walton C (Rhoda) chf dftsmn State Highway Dept h 903  
San Francisco  
Balmert Edwin F (Fern) gard h 1803 6th av  
Balo Ralph P (Alice M) br mgr Garford Motor Truck Inc h418  
15th av  
Balsam Arthur M (Gertrude V) dftsmn State Highway Dept h  
316 8th av  
Bambard Helen wtrs r 503 Capitol way  
Banbury Mabel L Mrs clk Veterans Compensation Dept h 14,  
715 4th av  
Bangs Sydney E (Lura) lab Olympia Door Co h 802 N Puget  
**BANKERS LIFE COMPANY OF DES MOINES IOWA,**  
Henry H Hager Agt, 502 Capitol Way, Tel 289, Res Tel  
307-J  
Baptist Tabernacle cor Rogers and Harrison av  
Barber Geo janitor YMCA r do  
Barbour Chas H (Sarah J) h 1420 Oak av  
Bard Lettie h RD2  
Baretich John (Alice; Olympia Cafe) h 706 4th av  
Baretich Wm (Olympia Cafe) r 706 4th av  
Barge Steve h RD3  
Barkell J F h RD3  
Barker Albt J (Gladys) driver Olympic Wood Co h 1805 6th av  
Barker Edw E (Dora M) cement wkr h 1236 10th av  
Barker Frank S (Ruby M) sawyer Olympia Door Co h Tum-  
water  
Barker Frank W cement wkr r 1236 10th av  
Barker Henry L (Gladys) whsemn Olympia Feed Co h 209 N  
McCormick  
Barker Jas M (Etta) driver Olympia Feed Co r 1204 10th av  
Barker Jos (Nellie) foremn Olympia Door Co h 304 Foote av W  
Barker Paul F (Lula J) eng PO h 203 7th av  
Barker Steve lab r 212 State av

**The Capital City Creamery**  
Is Unexcelled for Its Manufactured Products

# Olympian Auto Parts Co.

The House of a Million Parts

Full Line of New and Used Auto Parts

Everything in the Automotive Line

517 FOURTH AVENUE

TELEPHONE 1330



35

OLYMPIA CITY DIRECTORY (1925)

Barker W T h RD2  
 Barnard Paul G h RD3  
 Barnes Alice Mrs slswn C J Breier Co h 308 8th av  
 Barnes Arthur E r 1103 6th av W  
 Barnes Burt H (Estella N) driver SOCo h 1120 5th av W  
 Barnes Chas slsmn Geo Gauthier 110 4th av  
 Barnes Claude C (Lizzie M) driver h1109 Harrison av  
 Barnes Edna M Mrs dom 1601 Sylvester  
 Barnes Erle J (Rose M) director State Dept of Agriculture h  
 1077 Franklin  
 Barnes Ernest clk Barnes & Bowen r 203 4th av W  
 Barnes Fred (Laura; Barnes Garage) h 1015 Standish  
 Barnes Garage (Fred Barnes C B Gallea) 5th av nr Columbia  
 Barnes Joe mech Capital Motors Corp h RD2  
 Barnes John (Josephine) vet surg h 1103 6th av W  
 Barnes LeRoy asst eng St Peters Hospital r do  
 Barnes Lizzie Mrs bkpr Capitol City Creamery r 1109 Harrison  
 Barnes Sanford M (Jennie H) bkpr Co Treas h 1317 4th av  
 Barnes Walter H (Alice) meat ctr State Meat Market h3, 308  
 8th av  
**BARNES & BOWEN INC**, Chas H Bowen Pres, F D Cook  
 Sec, Geo E Stearns V-Pres (Thos McConkey), Grocers,  
 Bakers, Feed, Seeds and Fertilizers 201 4th Av W cor Co-  
 lumbia, Tels 47, 48 and 49 (See right top lines)  
 Barnhart Harry D (Pearl) lab h 228 N McCormick  
 Barnhart Moses (Mary) lab HMcCTCo h 501 4th av W  
 Barnhill Frank D (Hazel H) h 516 Young .  
 Barnhouse Olive nurse St Peters Hospital r do  
 Barr Harriett (wid Henry) r 1121 Jackson  
 Barr Leon H hlpr Baker Feed & Fuel Co r 1118 N Eastside  
 Barr Lottie (wid Jerimiah) r 1118 N Eastside  
 Barre Sclyndia h RD4  
 Barren Geo mech W L Keller r 5th av cor Franklin  
 Barrett Arthur J (Hazel I) logger h 705 Percival  
 Barrett Harold E (Constance E) clk Hotel Mitchell h 111 14th av  
 Barrett Henry logger r 705 Percival  
 Barry Florence M (wid Clyde A) h 510 E Bay dr  
 Barry Guy H (Bessie) slsmn Martin Hdw Co h 610 E Bay dr  
 Barry Helen M (wid Jerome N) h 1566 Jefferson  
 Barry Louise A (wid Daries K) r 610 E Bay dr  
 Bartalamay F millwkr Panama Lumber & Shingle Co r Boston  
 Harbor  
 Bartholet Chas J asst supvr Div of Hydraulics h 315 10th av  
 Bartlett Mark (Emma) slsmn h 511 13th av  
 Bartlett Nathan R bellmn Olympian Hotel r 511 13th av  
 Barton C H prin Co Sch h Tono  
 Barton Jas mech Morris Motor Co r 323 4th av  
 Bartran Ransom L clk State Treas r 1417 Adams  
 Bartzon Fred logger r 1005 Olympia av  
 Batcheller Willard D bkpr Pacific Coast Inv Co r 1210 6th av  
 Bateman Maude clk Mottman Mercantile Co r 1515 4th av  
 Bateman V Amy sten r 214 10th av

208 FOURTH AVENUE

JOS. CARR, JR.  
 CHARLOTTE ALGER  
 Telephone 1165

OLYMPIA, WASH.

**Insurance Service Corporation**  
**General Insurance**

36

**OLYMPIA GRINDER**  
 JOE LORENZ, Prop.  
 "WE GRIND EVERYTHING"  
 405 FRANKLIN STREET

**Expert Grinders and Saw Filers  
 Lawn Mowers a Specialty**  
 TELEPHONE 423

**SIGNS DECORATORS and  
 PAINT CONTRACTORS**  
**OLYMPIA SIGN COMPANY**  
 105 FIFTH AVENUE Telephone 54 OLYMPIA, WASH.  
 (1935) R. L. POLK & CO.'S, INC.

Bateman Wm C (Maude E; Bateman & Lewis) h 1515 4th av  
 Bateman Wm E (Margt E) bkpr Bateman & Lewis h 214 10th av  
**BATEMAN & LEWIS** (Wm C Bateman, R F Lewis), Auto  
 Replacement Parts, Official Stromberg and Bosch Service  
 Station 614 4th Av, Tel 432  
 Bates Gladys G bkpr Capital Natl Bank r 601 N Eastside  
 Bateson John J (Dorothea) clk State Dept Labor and Indus-  
 tries h 932 Glass av  
 Batko Matt cook r 112 N Adams  
 Battle Jessie Mrs tchr Co Sch h RD3  
 Baude Max C (Mary E) barber 515 Capitol way h 210 14th av  
 Bauer Alice M tchr Co Sch h Yelm  
 Baughn Chas (Mary) driver Shell Oil Co h RD2  
 Baulier Louis A lab Olympia Canning Co r 509 7th av  
 Bausch Henry h RD3  
**BAY VIEW HOTEL** (Sarah Walter, Mrs Mary Hutson),  
 Rooms With Board By the Week State Av se cor Water,  
 Tel 189  
 Bayer Anthony shop acct State Highway Garage r 302 State av  
 Beals Anna Mrs clk Mrs Pearl Wright r 220 11th av W  
 Beals T A foremn Olympia Door Co h RD2  
 Beamer Florence E Mrs dom 118 18th av W  
 Bean Chas L h RD4  
 Bean C E h RD4  
 Bean Earl L (Tillie; Olympia Junk Co) h 801 N Puget  
 Bean Jacob (Mollie; Capital City Hardware Co) h 1127 Puget  
 Beard Chas F (Mattie) barber h 618 N Central  
 Beardslee R M Mrs h RD4  
 Beaton Hugh S (Effie B) confr 512 Washington h do  
 Beatty Oliver S (Jessie G) millwkr h 17th av nr Jefferson  
 Beaty Ralph L (Pansy) driver Olympia Door Co h 1508 State av  
 Beaty S Adelaide h 916 Adams  
 Beauvilliers Louis lab r 509 7th av  
 Bechtel E May (wid Harvey) nurse h Tumwater  
 Bechtel Harvey M logger r E May Bechtel  
 Beck Anna Mrs dom 515 Adams  
 Beck Arthur H (Kate) tlr H S Gulbra h 8th av cor Wilson  
 Beck Chas B janitor St Peters Hospital r RD1  
 Beck Forrest E (Cath A) prin Lincoln Sch h 425 Maple Park  
 Beck Gladys tchr High Sch r 1034 Franklin  
 Beck Ida tchr Washington Sch r 708 4th av  
 Beck Olive J clk State Dept Labor and Industries r 4th av and  
 Wilson av  
 Beck Thos H presmn State Printing Office r Wilson av cor 8th  
 av  
 Becker Chas E prin Roosevelt Sch r 1917 Capitol way  
 Becker Edwin driver Jos Reder r Mrs Louise Becker  
 Becker Henry E tchr Co Sch h Tona  
 Becker John (Inez) driver Olympic Wood Co h Tumwater  
 Becker Louise (wid Henry) h Tumwater  
 Becker Ralph r Mrs Louise Becker  
 Beckland Oscar A (Pearl) carp h 902 Boundary

# OLYMPIA CREAMERY CO.

Manufacturers of OLYMPUS BUTTER and ICE CREAM  
Cash Buyers of Cream, Eggs and Poultry  
Wholesale Dealers in Dairy Products

114 NORTH WATER Telephone 10 OLYMPIA, WASH.

---

OLYMPIA CITY DIRECTORY (1925)

Beckwith Clarence E (Hazel P) sta opr Union Oil Co h Tumwater

Beckwith Cleo K barber r1066 Boundary

Beckwith D Kenneth (Aileen A) barber h 200 Maple Park

Beckwith Wm E (Lovina J) barber 113 4th av W h 1066 Boundary

**BEGG BROS (W E and H S), "For Better Service," Federal Tires and Tubes, Wheels, Rims and Rim Parts, Used Tires, Tire Repairing 618 4th Av, Tel 235**

Begg Hugh S (Emily; Begg Bros) h 602 N Bethel

Begg John h Wilson av nr N Bethel

Begg Willard E (Eva; Begg Bros) h 602 N Bethel

Beigh John R (Blanche) janitor h Tumwater

Beigh Lawrence E (Lula) driver Bowen & Lepper h RD2

Belknap Melvin D (Grace E) driver Olympia Door Co h Tumwater

Bell Geo O (Margt) farmer h North Carlyon add

Bell Susan V Mrs dom 809 6th av

Belless Eula E Mrs clk J C Penney Co Inc h E 825 4th av

Bellis Geo R (Hilda) lab h 1330 11th av

Bender Alice r 303, 1310 Capitol way

Bendle Thos (Annabelle) barber G J Rollman r 1802 5th av

Benedict Emma F (wid Wm) r 1420 Brawne av

Benek Amanda clk Co Agricultural Agt r 404 E Bay dr

Benek Leon (Annie) h 404 E Bay dr

Benek Mack r 404 E Bay dr

Benek Menda sten r 404 E Bay dr

Benesh Jas lab NPRy r 605 9th av

Benfield R h RD3

Benge Thos H (Elvira) millwkr Buchanan Lbr Co r end West Bay dr

B P O E No 186 E H Faubert E R Felix H Donges sec meets every Monday evening 609 Capitol way

Benner Arthur M (Debra) carrier h 1117 N Central

Benner Flora H r 1117 N Central

Benner Geo M logger r 1117 N Central

Bennett Donald F linemn Puget S P & L Co h RD3

Bennett Emery P (Alice E) gro 120 N Puget h 1201 Eastside

Bennett Evelyn V r 1201 Eastside

Bennett S Y poultry r Puget Route

Bennett Tilford M millwkr r 518 N Eastside

Benson Alfred J (Tillie B) gro h 118 Sherman av

Benson Caroline r 118 Sherman av

Benson Elizabeth r 118 Sherman av

Benson Geo (Lillian S) dftsmn h 254, 1310 Capitol way

Benson Homer A (June) clk J S Brewer h 425 old Maple Park

Benson Hotel (Marion Camby) 213½ 4th av W

Benson John lab r 1120 5th av

Benson John I (Minnie C) millwkr Olympia Door Co h 1119 Brawne

Benson Louis slsmn r 118 Sherman av

37

## OLYMPIA AUTO SERVICE GARAGE

H. C. EASTBROOK

Cars Washed, Polished, Greased and Simonized — Storage and Accessories

214 SIXTH AVENUE

TELEPHONE 1047

OLYMPIA, WASH.

36848

38

# SANITARIUM BATHS

The Famous Bake and Steam Baths — Soap Lake and Mineral Baths—Hand Oil Massage—Plain Water Baths and Showers  
Hot and Cold Compresses Equal to the Best Hot Spring Treatment

Dr. and Mrs. Oscar E. Lee, Proprietors

615 CAPITOL WAY, Mitchell Hotel Building Telephone 535

OLYMPIA, WASH.

## TALCOTT BROS. JEWELERS and OPTICIANS

Manufacturers Notary, Lodge and Corporation Seals

420-22 Capitol Way

Established 1872

OLYMPIA, WASH.

(1926) R. L. POLK & CO.'S, INC.

Benson Mabel G millwkr Olympia Knitting Mills Inc r 1120 5th av

BENTHIEN DORA A, Dressmaker 203 5th Av, Tel 753, r Knox Hotel, Tel 229

Benton J H h RD4

Benton Lester h RD4

Berg Henry h RD2

Berg Niel N slsmn Norpia Sales Co r 114 State av

Berg Roy r 1010 Franklin

Berger Geo L (Bess M) asst director State Dept of Licenses h Capitol Apts

Berger H O tariff expert Dept of Pub Wks h2403 Franklin

Bergh Esther H sten State Highway Dept r 122 21st av

Bergh H C h RD4

Bergh Roy P dftsmn State Comnr of Pub Lands r 1010 Franklin

Bergstrom Chester H dairy h RD5

Berkey Flora J (wid Victor H) h 1009 Capitol way

Berkowitz Morris (Olympia Junk Co) h Detroit Mich

Berkshire John (Fannie) supt of bldgs h 210 14th av W

Berlin Anna M (wid N Peter) h 1071 Jefferson

Berlin Elsie millwkr Olympia Knitting Mills Inc r 1071 Jefferson

Berlin Harvey student r 1071 Jefferson

Berlin Leonard student r 1071 Jefferson

Bernert Wm M millwkr HMcCTCo h 925½ Giles av

Bernhardt Adolph E mech Anderson & Spencer h RD2

Berquist Augusta (wid Lars) r H J Munro

Berry Luther P driver h 809 6th av

Berry Mattie E tel opr PT&TCo r 403 9th av

Bert Leona M tel opr PT&TCo r 1002 Adams

Bert Lester S millwkr r 1002 Adams

Bert Paul A (Myrtle L) millwkr h 1002 Adams

Bertlin Emil (Anna) carp h 1026 Prospect av

Betroche Chas L (Rosanna) farmer h Tumwater

Berwert Mary (Jacob) h 1217 4th av

Besse C A h RD4

Besson S S poultry h RD3

Betcher Albt J (Helen) millwkr HMcCTCo h rear of cor Jackson and Rogers av

Betcher Bertha Mrs (Occidental Rooms) h 112 N Adams

Betcher Clarence A millwkr r rear of cor Jackson and Rogers av

Betcher Henry (Bertha) lab h 112 N Adams

Betcher Peter r 112 N Adams

Bethel Clarence H (Della) gro 1501 Capitol way h do

Bethesda Lutheran Church Rev Claes Thunberg pastor 505 Adams

Bettcher Peter h RD5

Bettman Block 4th av cor Adams

Bettman Wm W Bettman's Men's Shop h 216 9th av

**BETTMAN'S MEN'S SHOP, Wm W Bettman Mgr, Clothing and Men's Furnishings 410 Capitol Way, Tel 105**

Betts Andw G (Alvy) supt Puget S P & L Co h 19, 727 4th av

J. E. TONE

M. L. TUCKER

39

# TONE-TUCKER MOTOR CO.

Durant, Oldsmobile, Flint Sales and Service

FIFTH AT COLUMBIA

Telephone 650

OLYMPIA, WASH.

OLYMPIA CITY DIRECTORY (1925)

Betts Floyd G (Rachel M) eng U S Cadastral Engineers h 2501 Washington  
 Betts Geo R h 103 Thomas  
 Betts Nina O (wid Ephriam) r 1071 Cherry  
 Betts W A h RD2  
 Bever Elsworth B window clnr r 518 N Eastside  
 Bever Frank J (May C) lab h 518 N Eastside  
 Beveridge Edna M sten Dept of Pub Wks r 223 Sherman av  
 Beveridge John R (Margaret C) h 223 Sherman av  
 Bickerton Wm J (Grace) firemn h G 1011 6th av  
 Bickford John M h Tumwater  
 Bickle Clair lab r Ed Bickle  
 Bickle Ed (Gertrude) tmstr h Tumwater  
 Bickle R h RD3  
 Bigelow Anne E (wid Danl R) h 918 Glass av  
 Bigelow Apartments 727 4th av  
 Bigelow A h RD1  
 Bigelow Carl logger r 1207 9th av  
 Bigelow Clarence logger r 1207 9th av  
 Bigelow D J dairy h RD3  
 Bigelow Edris tchr Co Sch h Rainier  
**BIGELOW GEO R (Edith R; Bigelow & Manier), City Attorney, h 612 N Quince**  
 Bigelow J H h RD3  
 Bigelow Lowell logger r 1207 9th av  
 Bigelow Margaret A (wid Jos C) h 1207 9th av  
 Bigelow Margt E tchr r 918 Glass av  
 Bigelow Ray L (Belle L; Bigelow Apartments) h 723 4th av  
**BIGELOW & MANIER (George R Bigelow, Wm W Manier) Attorneys at Law 3 Funk-Volland Bldg, Tel 599**  
 Bigler Bertha tchr Co Sch h Grand Mound  
 Billings Edna B tchr Co Sch h Tenino  
 Billings Geo A (Helen) logger h 1316 San Francisco av  
 Billings Janette M (wid Wm) h 320 9th av  
 Billings Paul W (Imogen D) sls mgr Buchanan Lumber Co h 108 21st W  
 Billingslea Jas H asst supvr U S Forest Service r 1028 Capitol way  
 Birchler Fred J h RD2  
 Bird Mahala A (wid Richd C) h 600 Jefferson  
 Birkbeck Vincent L (Margaret) mech Service Garage r 204 4th av W  
 Bish Frank A (Eva) mech Olympian Hotel h 1818 Pine av  
 Bishop Alonzo F (Jeannette) sub clk PO h 206 N McCormick  
 Bishop Chas J (Margaret E) driver Olympia-Tacoma Auto Freight Co h D 825 4th av  
 Bishop W L h RD5  
 Bissell Abner P (Bernice) pkr Olympia Shingle Co h 1617 6th av  
 Bissell Grace E R bkpr Olympia Sand & Gravel Co r 1615 State  
 Bissell Mary E (Fred) h 1615 State av  
 Bittner Godfrey E (Grace) clk r 217, 218½ 4th av  
 Bixler Elizabeth h RD5

**Shelton  
Wall  
Paper  
Store**

—  
**MUESLE  
and  
HAWKINS**

—  
**Contractors**

—  
 Painting  
 Decorating  
 Paper-  
 hanging

—  
**PHONE  
463**

—  
**Shumaker  
Building**

—  
**SHELTON  
WASH.**

40

**DRIVE IN****MIKE'S TIRE SERVICE**

VULCANIZING

PENNYSYLVANIA VACUUM CUP DISTRIBUTOR

VULCANIZING

Telephone 1348

Balloon and High Pressure

119 North Capitol Way

# Shelton Optical Parlors

EYES EXAMINED — GLASSES FITTED

DR. GLENN W. LANDERS, Optometrist

SHELTON, WASH.

(1925) R. L. POLK &amp; CO.'S, INC.

- Black John E (Elizabeth) lab h 1013 8th av  
 Black Katherine A J cashr Mottman Mercantile Co r RD5  
 Black Oscar (Pearl) auto Indy 423 Columbia h do  
 Blackler Ashley D (Nellie R) slsmn h 1017 Bigelow av  
 Blackman Wm A (Stella; Capital City Transfer Co) h Puget Route  
 Blair Alvt carp r N Puget nr Ethridge av  
 Blair Eli (Simara M) lab h N Puget nr Ethridge av  
 Blair Robt carp r 621 Eastside  
 Blake Claire tchr Washington Sch r 303, 1310 Capitol way  
 Blake Eva L (wid Frank G) h 234 Decatur  
 Blake Fred Puget Route  
 Blake Ida R chf clk Wilson & Hunter r 234 Decatur  
 Blake John h Puget Route  
 Blake Nellie tchr Roosevelt Sch h 303, 1310 Capitol way  
 Blake Thos tlr N P Faris r 308 4th av  
 Blake Willis G driver r 234 Decatur  
 Blakeslee Frank G (Sadie R) pres Olympia Hdw Co Inc h 217 17th av  
 Blanchard Byron D (Clara) eng h1623 6th av  
 Blanchard Edith F (wid Herbt W) h D 720 Adams  
 Blanchard Frances chocolate dipper Buckeye Extract Co r 1006 Prospect  
 Blanchard Marion tchr P S r D 720 Adams  
 Blanchard Stanley A (Hazel E) dftsmn State Highway Dept h 207 Carlyon av  
 Bland Luther L (Mollie) lab h 609 Jefferson  
 Bland Nathan (Mollie) millwkr h 609 Jefferson  
 Blankenship Robt L (Elizabeth C; The Smoke House) h 1407 Capitol way  
 Blass John (Minnie) lab h 210 5th av W  
 Bloom Arthur J surveyor r 926 4th av  
 Bloom Willis S (Blanche E) state printing expert Secretary of State h 926 4th av  
 Bloom W Russell student r 926 4th av  
 Blue Daisy tchr Co Sch h Tenino  
 Blumquist Edw logger r 1512 State av  
 Blumstrom John Y (Gertrude) agt NPRy h 307 18th av  
 Blunt Kenneth B (Gladys) slsmn Rose-Bolster Co h 228 N Central  
 Blunt Pearl student r 106 6th av W  
**BOARD OF EDUCATION, W W Manier Pres, Dr K L Partlow Member, Mrs Frances Walthew Sec, E L Breckner Supt of Schools, High School Bldg, 12th Av and Capitol Way, Tel 543**  
 Boardman Fred G (Kathryne) eng Court House h 406 18th av  
 Boardman Freeman O (Helen E) insp h 1413 Capitol way  
 Boardman Richd I r 1413 Capitol way  
 Boberg Philip (Alice) boilermkr Olympia Boiler Wks h RD2  
 Bock Arnold G (Hattie C) carrier PO h 1712 Hays av  
 Bock Arthur A r 1712 Hays av  
 Boe F h RD5

# Bader Insurance Agency

**H. C. BADER**  
**INSURANCE IN ALL ITS BRANCHES**

115 Fifth Avenue Telephone 194 Olympia, Wash.

OLYMPIA CITY DIRECTORY (1935)

Bohac Edw C (Helen) auto rpr Jos Bohac h Alder Beach  
 Bohac John F (Lorraine B) auto rpr Jos Bohac h 507 Stewart  
 Bohac Jos (Mary) auto top rpr 225 4th av W h 309 8th av  
 Bohr J B h RD5  
 Bolender E H h RD2  
 Bolender Geo lab r RD2  
 Bolender Henry (Nora; Olympia Garage Co) h21, 503 Wash-  
 ington  
 Bolender John h RD2  
 Bolender R H clk Olympia Garage Co h RD2  
 Bolender Wilbur F (Loodla) auto rpr and garage 111 State av  
 h RD2  
 Bolley Andw H (Mattie) gard Dept Business Control h RD2  
 Bolster Jay D (Myrtle; Rose-Bolster Co) h 146 Rogers av  
 Bolster John (Lilly) h Plymouth nr 7th av W  
 Boltinghouse A M h RD3  
 Bolton Basil A (Minnie) asst chf Olympia Fire Dept h 316  
 Capitol way  
 Bolyard D O h RD4  
 Bomvard Helen H wtrs Olympian Hotel r 503 Capitol way  
 Bonallo David (Alice M) electn h 9th av and Fir  
 Bonney Leonard L (Minnie) driver h 2318 Columbia  
 Bonnin Augusta nurse St Peters Hospital r do  
 Bonsall Carroll S (Letha) acct State Auditor h 1026 8th av  
**BOOKSTORE THE INC, Thos J Lofgren Mgr, Books, Sta-  
 tionery, School and Office Supplies, Typewriters and Sup-  
 plies, Filing Cabinets, Pictures and Picture Framing, Archi-  
 tects' and Engineers' Supplies 406 Capitol Way, Tel 1 (See  
 back cover)**  
 Boone Annie L millwkr Olympia Knitting Mills Inc r Puget  
 Route  
 Boone Chas W h Puget Route  
 Boone Docia M sten Olympia Canning Co r Pine East city limits  
 Boone Elmer h Puget Route  
 Boone Horace E (Ella) boommn h Puget Route  
 Boone Jesse S (Genevieve) janitor Liberty Theatre Co h RD2  
 N Miller  
 Boone J D h Puget Route  
 Boone J R Mrs h RD2  
 Boone J W h RD2  
 Boone Myrtle M Mrs r 718 15th av  
 Boone Ray S h RD2  
 Boone Ruby I student r S L Boone  
 Boone Saml L (Matilda) h Sawyer nw cor 5th av  
 Boone W L firemn Olympia Door Co h RD3

**K&K FURNITURE CO.**  
 FURNITURE WORTH LIVING WITH  
 USE YOUR CREDIT  
 Jay T. Kanney—G. H. Christoferson—G. H. Kuhns  
 SIXTH and FRANKLIN TELEPHONE 1193



**Copeland  
 Lumber  
 Co.**

**Retail  
 Lumber**

**Telephone  
 412**

**4th and  
 Water St.**

**OLYMPIA**

*The Yellow  
 Yard*



42

**CAPITAL  
CITY  
TRANSFER  
CO.**

Wm. A.  
Blackman  
Geo. W. Ismay

**Transfer  
Storage  
and  
Wood**

**Furniture  
Packing  
and  
Moving**

**Long  
Distance  
Moving a  
Specialty**

**508  
Columbia**

Tel. 264

**OLYMPIA  
WASH.**

**Capital Business College**

A High Grade School Qualifies for Business

BOOKKEEPING—SHORTHAND—TYPEWRITING

426 Capitol Way, Talcott Bldg. Telephone 96 Olympia, Wash.

(1925) R. L. POLK & CO.'S, INC.

- Booth Elmer N (Alberta) asst supt Priest Point Park h 1828 E Bay dr  
 Bordeaux Antillia (wid Gilbert J) h 103 Maple Park  
 Bordeaux Edgar J (Mabel B) h 323 18th av  
 Bordeaux Leo J student r 103 Maple Park  
 Borden Arthur M (Alice) millwkr Olympia Veneer Co Inc h 923 Olympia av  
 Borden Lyman E (Bertha) millwkr Olympia Veneer Co Inc h 308 Quince  
 Borden Ruth O millwkr Olympia Knitting Mills Inc r 923 Olympia av  
 Borven Joe clk r 312 N Columbia  
 Bossuyt Albt h RD1  
 Bostian Georgia R bindery wkr State Printing Office h RD2  
 Botford Willard (May) h 912 5th av  
 Boulevard Garage h RD2  
 Bouley Honore N (Emma W) auditor Dept Business Control h 1316 Washington  
 Bouley Noel W clk State Dept Labor and Industries r 1316 Washington  
 Bourbeaux Ada P Mrs h 1607 Bowman av  
 Boutelle Almond H (Thelma W) millwkr h 7, 422 8th av  
**BOWEN CHAS H (Agnes L), Pres Barnes & Bowen Inc, h 401 21st Av**  
 Bowen C Henry clk Barnes & Bowen r 401 21st av  
 Bowen Fred S (Bella; Bowen & Lepper) h RD2  
 Bowen & Lepper (Fred S Bowen Philip H Lepper) gro 4th av se cor Frederick  
 Bower R V h Puget Route  
 Bowerman Mary (wid David) r 414½ 4th av  
 Bowlin Allan K slsmn Gottfeld's r 1223 Adams  
 Bowlin Chas W (Emilie K) contr 1223 Adams h do  
 Bowlin Ida M student r 1223 Adams  
 Bowman Claire (Gertrude) director Dept of Labor and Industries h 256, 1310 Capitol way  
 Bowman Eug h RD1  
 Bowman Jesse B (Wava V) h 1410 Franklin  
 Bowman Naomi tel opr PT&TCo h RD2  
 Boyce Willford H (Mary) firemn HMcCTCo h 1210 N Puget  
 Boyd Fidelia A (wid Ervin J) h 323 11th av  
 Boyer Hannah C Mrs dom 2017 E Bay dr  
 Boyer Vera tchr High Sch r 5, 603 Capitol way  
 Boyle Albt N h 926 Prospect av  
 Boyle Aye (Flossie) lab h 920 Prospect av  
 Boyle Bessie E r 926 Prospect av  
 Boyles Albt E (Cecile E) mgr PT&TCo h 214 18th av

**Capital City Forging Works, Inc.**

A. P. PLANTENBERG, Manager

Implement Dealers—Blacksmiths—Welders and Wheelwrights  
 Auto Springs—Wheels—Truck Bodies

505 WATER

Telephone 635

OLYMPIA, WASH.

# FERTILIZERS

WHOLESALE  
and RETAIL

**BARNES & BOWEN, Inc.**

201 FOURTH AVE. W. Tels. 47, 48 and 49 OLYMPIA, Wash.

OLYMPIA CITY DIRECTORY (1925)

- Bozarth A J h RD4
- Braack Earl W h RD2
- Braack J F h RD2
- Brackett Harold G student r 1015 Columbia
- BRACKETT WM H (Katherine), Cashr Capital National Bank,**  
h 1015 Columbia
- Brackner Elmer L (Eugenia) supt of City Schools h 123 21st av
- Bracy Lucien (Catherine) h 1208 Conger av
- Bradford Edwin L (Eva M) contr h1236 8th av h do
- Bradford John janitor St Peters Hospital r do
- Bradley Hal M (Bertha) driver SOCo h Tumwater
- Bradley Thos farmer r J C Law
- Bradshaw Anna Mrs smstrs h 723 13th av
- Brady Lloyd D whsemn Shell Oil Co r 415 Jefferson
- Brady Nan Mrs wtrs h 624 State av
- Braese Alfred H lab r 1104 N McCormick
- Brainard Clarence M h RD2
- Braman Edw slsmn Skaggs United Stores r Knox Apts
- Branch Geo W mail carrier h 16, 503 Washington
- Brandt Geo W (Mabel C) slsmn Skaggs United Stores h 1019**  
Capitol way
- Brandt Verner (Ellen) millwkr Olympia Veneer Co Inc h 1306**  
Tullis
- Brannock Robt L mgr WB&BCo r 30, 114 N Washington
- Brasch W F h RD4
- Brase Leon H (Emma) mech h 416 McCormick
- Brassfield Cecil A (Jessie) mech h 812 6th av
- Brassfield Ernest millwkr r 605½ 4th av
- Brassfield Jos M (Edith) mech h RD3
- Braun Albt F (Ruth E) police h 1216 10th av
- Braun Ruth K student r 1216 10th av
- Brautigam Louis P (Hilda) carmn PSP&LCo h 906 State av
- Bray Claude E (Wanita) lab Olympia Door Co h 1332 E Bay dr
- Bray Edw clk SOCo r 1002 2d av
- Bray Fredk H (Sarah J) lab h 2421 Franklin
- Bray Robt E slsmn r 1005 Olympia av
- Bray Walter O (Pearlee) mech Wray & Wray h 1805 7th av
- Brayles L E h RD3
- Brazeal Andw J (Sarah A) carp h 1203 Adams
- Brazeal Helen F clk The Book Store r 1203 Adams
- Brazeal Richd W clk Olympia Knitting Mills Inc r 1203 Adams
- Brazel Bradford P (Linda M) foremn h 1403 Adams
- Brazel Geo (Ida) supt h 1716 Capitol way
- Brech Carl J h RD4
- Brech John h RD4

# Paint - Oils - Varnishes

**Baker Feed and Fuel Co. TELEPHONE 7**

407 CAPITOL WAY

**CRANE'S CAFE & BAKERY**

HOME MADE PASTRY - REST ROOMS IN CONNECTION

TELEPHONE 583

OLYMPIA, WASH.

THE BEST PLACE IN  
OLYMPIA TO EAT

WM. WILKENSING - GUST JOHNSON

44

# HOTEL CARLTON

H. E. HARDIN, Proprietor

Columbia St., Between 4th Ave. and State OLYMPIA, WASH.

(1925) R. L. POLK & CO.'S, INC.

## Bunce Music House

—  
Gulbransen  
The  
Registering  
Piano  
Kimball  
Marshall &  
Wendall  
and  
Chickering  
Pianos

—  
Brunswick  
Phonographs

—  
Records  
and  
Sheet Music

—  
PHONE  
163

—  
505  
Washington

—  
OLYMPIA  
WASH.

BRECKNER ELMER L (Sadie E), City Supt of Schools High School Bldg, h 123 21st Av

Breier C J Co C E Akers mgr clothing 222 4th av

Breitschneider Alfred car washer Rose-Bolster Co r 314 Water

Brenner Earl G (Hazel M) v-pres J J Brenner Oyster Co h 122 Sherman av

Brenner John J (Hannah L) pres J J Brenner Oyster Co h 136 Sherman av

Brenner J J Oyster Co J J Brenner pres D I Ginder sec-treas 506 4th av W

Brenner Wm C (Edna H) road insp h Tumwater

Bretschneider Fred mech r 116 N Water

Brewer Florence Mrs tchr Co Sch h Rochester

Brewer John clk r 427 Cherry

Brewer John G (Dorothy) clk Ernest Thoman h 427 Cherry

Brewer John S (Ella L) gro 228 4th av W h 234 N Central

Brewer Linus V (Grace L; L V Brewer Co) h 1813 Capitol way

Brewer Lois bkpr L V Brewer Co r 317 Hancock

BREWER L V CO (L V Brewer), Hay, Grain, Flour and Feed 423 N Capitol Way, Tel 13

Brewer Wm J (Helen) driver Baker Feed & Fuel Co r Little Rock Wn

Bricker John L (Lilly B) supt Buchanan Lumber Co h 135 Hancock av

Bricker Lucile M clk Capital Savings & Loan Assn r 135 Hancock av

Brickert Edwin W Rev (Zaidee E) h 1307 Capitol way

Brickert Helen V student r 1307 Capitol way

Brickert Lawrence G sten r 1307 Capitol way

Brickert Zaidée E Mrs music tchr 1307 Capitol way h do

Bridenstine Van (Olympia Variety Store) h 114 25th av

Bridgeman Chester (Hazel) h 1, 422 8th av

Bridges Bertha V r H W Bridges

Bridges Hugh W (Irene E) blksmith h RD3

BRIDGES JESSE B (Mary S), Judge Supreme Court h 301 21st Av W

Bridges Margt B student r H W Bridges

Bridgewater Geo logger r 121 N Washington

Bridgford Wayne L (Adalene M) phys 20 Pacific bldg h 203 17th av W

Bridgman Edith M tel opr PT&TCo r 412 8th av

BRIFFETT GEO F (Maude M) Automobile Repairing By Expert Mechanics, Nash Cars, State Av cor Franklin, Tel 43, h 217 17th Av

Briggs Harry P (Bessie V) clk State Printing Office h RD2

Briggs John W (Florence) bkpr J F Kearney & Co h RD2



# Capital City Window Cleaning Co.

E. J. SCOTT, Manager

WINDOW CLEANING—FLOOR WAXING

Office 509 Capitol Way Telephone 1037 OLYMPIA, WASH.

OLYMPIA CITY DIRECTORY (1925)

- Briggs May I Mrs tchr Co Sch h 1610 Capitol way
- Brillhart B F h RD2
- Brink Beatrice B nurse St Peters Hospital r do
- Brinegar Butler M (Lila M) driver Olympia-Tacoma Auto Freight Co h 726 Adams
- Brisbin Logging Co h RD4
- Britt Wm E r 922 Adams
- Britto L W h RD1
- Brodie Horace C (Maud R) asst Attorney General h 2407 Washington
- Bronson Motor Co W E Bronson mgr autos 707 Capitol way
- Bronson Waldemar E (Margaret R) mgr Bronson Motor Co h 2414 Capitol way
- Bronson Wynn r 16, 114 N Washington
- Brooks Dugan millwkr Olympia Harbor Lumber Co r 1407 4th av W
- Brooks G David (Inez M) boommn HMcCTCo h 919 Brawne
- Brooks Herbt h Puget Route
- Brooks Hiram A Rev (Clara M) pastor Church of God h 1409 7th av
- Brooks Jos (Pearl J) trucker h 1407 4th av W
- Brooks J Earl trucker r 1407 4th av W
- Brooks Richd h RD2
- Brooks Susan P r 1407 4th av W
- Brostrom John E (Violet M) lab Olympia Canning Co h 509 7th av
- Brosseau Fred h RD3
- Broten Harvey (Edith) brk lyr h Water nr 8th av W
- Broten Joanna M r 414 10th av
- Broten John P (Christine) contr 414 10th av h do
- Brower Alfred L millwkr Tumwater Lbr Co r J J Brower
- Brower John J (Luceba) janitor h Tumwater
- Brower Marie J sten Olympia Realty Exchange r J J Brower
- Brower Raymond R millwkr r J J Brower
- Brown A D loc mgr Remington Typewriter Co r Seattle
- Brown Beriah r 1772 Bigelow av
- Brown Bernice sten r 1215 N Puget
- Brown Cassandra M tchr Co Sch h Yelm
- Brown Chas E (Rose C) notions 309 4th av h 906 McCormick
- Brown Chas T barber r D825 4th av
- Brown Danl W (Elizabeth) carp h Tumwater
- Brown Delia Mrs dom r 1516 Thurston av
- Brown Emmett F (Annie M) carp h Tumwater
- Brown Ernest A (Leona) mech Rose-Bolster Co h 1268 4th av
- Brown Frank H (Ethel M) mach State Highway Garage h Tumwater

# H. A. LONG BOAT CO.

BOATS BUILT TO ORDER

N. COLUMBIA at A Phone 1216 OLYMPIA, WASH.

45

# DAYLIGHT BAKERY BUTTER KRUST

For QUALITY and SERVICE

"We Aim to Please"

307 Fourth Avenue

THE BEST BREAD MADE  
Taste Tells the Tale

Telephone 949

46

# COWLING'S HOTEL

Special  
Rates by  
the Week

Tub and  
Shower  
Baths

Where the  
Eagles  
Roost

—  
Washington  
Corner  
STATE

Telephone  
1036

## G. & G. Radio and Electric Shop

### ELECTRICAL CONTRACTORS

412 WASHINGTON Telephone 42 OLYMPIA, WASH.

(1925) E. L. POLK & CO.'S, INC.

- Brown Fred J dist supt Co Sch h Yelm  
Brown Geo W (Nina P) firemn Panama Lumber & Shingle Co  
h2405 Lakeside dr  
Brown Georgie Mrs restr 620 4th av h do  
Brown Grover farmer r Oscar Brown  
Brown Guy millwkr r Oscar Brown  
Brown Harry P (Elma F) carp h 1120 San Francisco  
Brown Hester S Mrs (Brown & Brown) h 4 Thompson Apts  
Brown Hilles T (Catherine H) phys 205 Columbia bldg h 2301  
Capitol way  
Brown Jas H (Hester S; Brown & Brown) h 4, 208 6th av  
Brown Jean G tchr Co Sch h Littlerock  
Brown Jennie E (John S) h 514 Fir  
Brown Leland P (Maude H) prin High Sch h 1120 Franklin  
Brown Lenn L (Brown & Moller) r 209 5th av W  
Brown Lester (Jeannette) lab h 308 N Capitol way  
Brown Nannie Mrs r 406 4th av  
Brown Oscar lab Olympia Door Co h Tumwater  
Brown S H trucker Tumwater Lbr Co h RD4  
Brown Thos (Elizabeth) carp h 1215 N Puget  
Brown Wm r 308 4th av  
Brown Wm C (Georgia) logger h 620 4th av  
Brown Wm H (Ella) eng h 1338 N Quince  
**BROWN & BROWN (James H and Hester S Brown), Insur-  
ance and Surety Bonds 523 Washington, Tel 295**  
Brown & Moller (L L Brown Anders Moller) auto rprs 209  
5th av W  
Brownell Leeman G (Ruth) lab NPRy r 1712 Eastside  
Brownlee Chas F (Viola) rancher h RD3  
Brownlee Chas F jr lab Olympia Door Co r C F Brownlee  
Brownlee Margaret R sten State Inheritance & E div r C F  
Brownlee  
Broyles Alva E h RD2  
Broyles David R (Bertha) driver C H Bethel h Wildwood Park  
RD5  
Brundgard Henry P tlr H S Gulbra r 605½ 4th av  
Brunk Earl (Corine) mech W L Keller r Nommensen Apts  
Bryan Charlotte (wid Marion W) h 802 15th av  
Bryan Frank lab Percival Dock r 802 15th av  
Bryan Lillian R Indywkr Capital Steam Lndy r 1010 Prospect av  
Bryan Mell M (Bertha) lab Olympia Door Co h 303 Olympia av  
Bryan Melvin G (Ethel) lab Olympia Door Co h 1010 Prospect  
Bryan Richd H student r 715 West Bay dr  
Bryan Thelma M sten r 715 West Bay dr  
Bryan Wm tmstr Olympia Door Co r 802 15th av  
Bryan Wm H (Maude H) slsmn h 715 West Bay dr

## CAPITAL MOTORS CORPORATION

Distributors for Thurston and Mason Counties  
Telephone 533



FIFTH AVE. Cor FRANKLIN OLYMPIA, WASH.

# Epley's Day & Night Garage

"Home of the True Blue Oakland Six"

701-5 FOURTH AVE. Telephone 1083 OLYMPIA, WASH.

OLYMPIA CITY DIRECTORY (1925)

Bryndelson Clarence h RD1  
 Bryning Arthur L carrier P O h RD3  
 Buchanan Geo L (Lucy M) eng h 902 Franklin  
 Buchanan Lumber Co R G Wright pres-mgr West Bay av  
 Buchanan Madeline G r 902 Franklin  
 Buck Emmet A (Hazel) presmn Washington Recorder Pub Co  
 h1617 Thurston av  
 Buck Harold F clk J C Penney Co Inc r 804 Franklin  
 Buckeye Extract Co J B Stentz pres F D Cook v-pres E M Hahn  
 sec 213-215 N Capitol way  
 Bucknell Lynn (Sophia) logger h 213½ N Franklin  
 Budd Chas W (Alice) carp h Fir ne cor 8th av  
 Budd Wesley C (Edna G) h Fir and 8th av  
 Bridge H P h RD5  
 Buchrer Elmer P (Olga H) chf eng Dept Business Control h  
 2508 Capitol way  
 Buffum Charlotta (wid Rinnah W) h 1531 Columbia  
 Bullard Frank W (Della) eng Olympia Canning Co h 409 9th av  
 Bunce Daphne A society editor Olympia News r 417 18th av E  
 Bunce Earl D lab r 1834 Bigelow av  
**BUNCE GEO V (Laura M; Bunce Music House) h 417 18th Av**  
 Bunce Gilbert L lab r 1834 Bigelow av  
 Bunce Loren M (Bessie) tmstr Olympia Door Co h 1834 Bige-  
 low av  
 Bunce Marion cook r 504½ 4th av  
 Bunce Marion G lab 1834 Bigelow av  
**BUNCE MUSIC HOUSE (G V Bunce, C E Allen), Gulbransen**  
**Kimball, Marshall Wendall and Chickering Pianos, Brun-**  
**swick Phonographs, Records and Sheet Music 505 Washing-**  
**ton, Tel 163 (See left side lines)**  
 Bunce Scott (Edith) gro 1029 N Puget h do  
 Burchett Margaret (wid Wm B) h 822 N Eastside  
 Burdick Lenora J Mrs millwkr Olympia Knitting Mills Inc r  
 RD2  
 Burdick Wilbur E millwkr Olympia Harbor Lbr Co h RD3  
 Bureau of Biological Survey Old Capitol bldg  
 Burell Emma clk PT&TCo r 414 Eastside  
 Burell Hilda L cashr Capital Savings & Loan Assn r 414 East-  
 side  
 Burell Peter (Theresa) marine eng h 414 Eastside  
 Burfiend J J h RD3  
 Burfoot Archie C (Mildred) baker Daylight Bakery h 1521  
 Cherry  
 Burfoot Clarence R r 520 13th av  
 Burfoot Geo T (Rosa) carp h 520 13th av

## GENERAL LUBRICATING AND DISTRIBUTING COMPANY

Office Phone 630—Residence Phone 229

Thurston cor N. Columbia

OLYMPIA, WASH.



TELEPHONE 587

**DWELLY FURNITURE COMPANY**  
 QUALITY FURNITURE — REASONABLE PRICES

OLYMPIA, WASH.

48

Walter  
Crosby

**Insurance**

—  
Fire  
Accident  
and  
Health

Plate  
Glass  
Automobile  
Steam  
Boiler  
Burglary  
and  
Liability

—  
NOTARY  
PUBLIC

—  
City Hall  
Telephone  
244

—  
OLYMPIA

Dependable Merchandise Only at  
**MOTTMAN'S**

(1925) R. L. POLK & CO.'S, INC.

Burford Richd O (Ida N) sec Capital City Map & Blue Print Co h 2408 Capitol way

Burg Esther sten r 122 21st av

Burgess Bolis M (Nettie) slsmn Shell Oil Co h 915 Olympia av

Burgess E M Mrs hairdrsr 915 Olympia av h do

Burgher Earl J auto wrecker 315 N Capitol way h 321 8th av

Burgoyne Florence A cashr Liberty Theatre Co r 1507 Union av

Burgschmidt Geo chemist r 617 Capitol way

Burke Ray P (Louella) tchr High Sch h 822 N Tullis

Burkhard Wm J meat ctr Jos LaFontaine r 123 Adams

Burnette Hart B slsmn Western Auto Sup Co r Knox Hotel

Burns Alfred logger r 313 State av

Burns Bartlett S student r 805 14th av

Burns Fred J (Meri) carp r 805 14th av

Burntrager Wm K (Althea) sales agt PSP&LCo h RD4

Burr Chas A (Clara M) teller Capital Natl Bank h RD2

Burrell Louis baker Olympia Bakery r 414 Eastside

Burrell M C h RD2

Burris Jene restr wkr Cranes Cafe r Kneeland Hotel

Burrows Hub F clk PSP&LCo r 1217 4th av

Burrows Saml J (Mary E) h 611 Jefferson

Burrus Leonard D (Laura D) clk State Dept Pub Inst h RD5

Burtch Geo millwkr h 1324 10th av

Burtchett Roy C (Mildred) barber Wm Klaumbush h 818 N Eastside

**BURWELL EDGAR H (Jessie M), General Secretary YMCA**  
h 617 Adams, Tel 773-L

Busey C Earl (Ruth) h 1712 Farwell av

Bush Belle (Winstanley & Bush) r 120 17th av W

Bush & Lane Piano Co C H Meurs sls mgr 510 Washington

Bushell Fernley student r 317 7th av

**BUSHELL WM F, First Class Shoe Repairing 514 Capitol Way,**  
h 321 7th Av

Bushnell Georgette M (wid Wm) h 702 E Bay dr

Bussabarger M Lois r 214 8th av

Bussabarger Robt L Rev (Mary E) pastor First Christian Church h 214 8th av

Bustrack Gunder J (Marie) h South end Boundary RD3

Bustrack John (Josie M) bkpr Martin Hdw Co h 1602 Eastside

Byers Alfred millwkr r 605½ 4th av

Byran Thelma M typist State Dept of Licenses r 715 W Bay dr

Buzzard Bertha Mrs tchr Co Sch h RD3

Buzzard Layton R (Bertha M) prin Co Sch h 1260 Langridge

Cable Beatrice tchr Co Sch h Rochester

Cagwin Albt E (Helen I; A E Cagwin Co) h 208, 1310 Capitol

Cagwin A E Co (A E Cagwin) real est 115 5th av

**CAPITAL REALTY CO.**

CITY PROPERTY

R. F. DOTSCHE

FARM LANDS

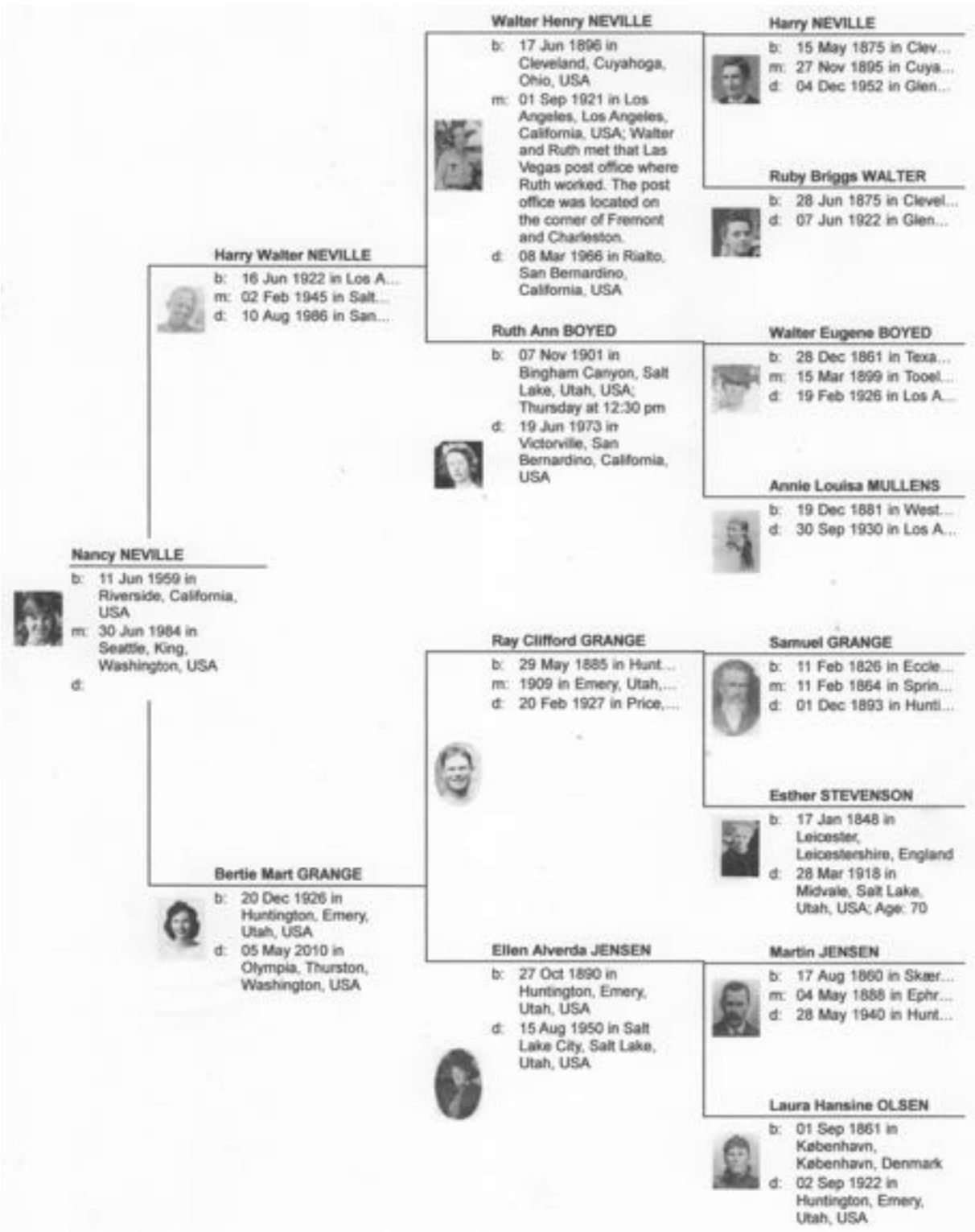
Loans—Logged Off Lands—Timber Lands

111 FIFTH AVENUE

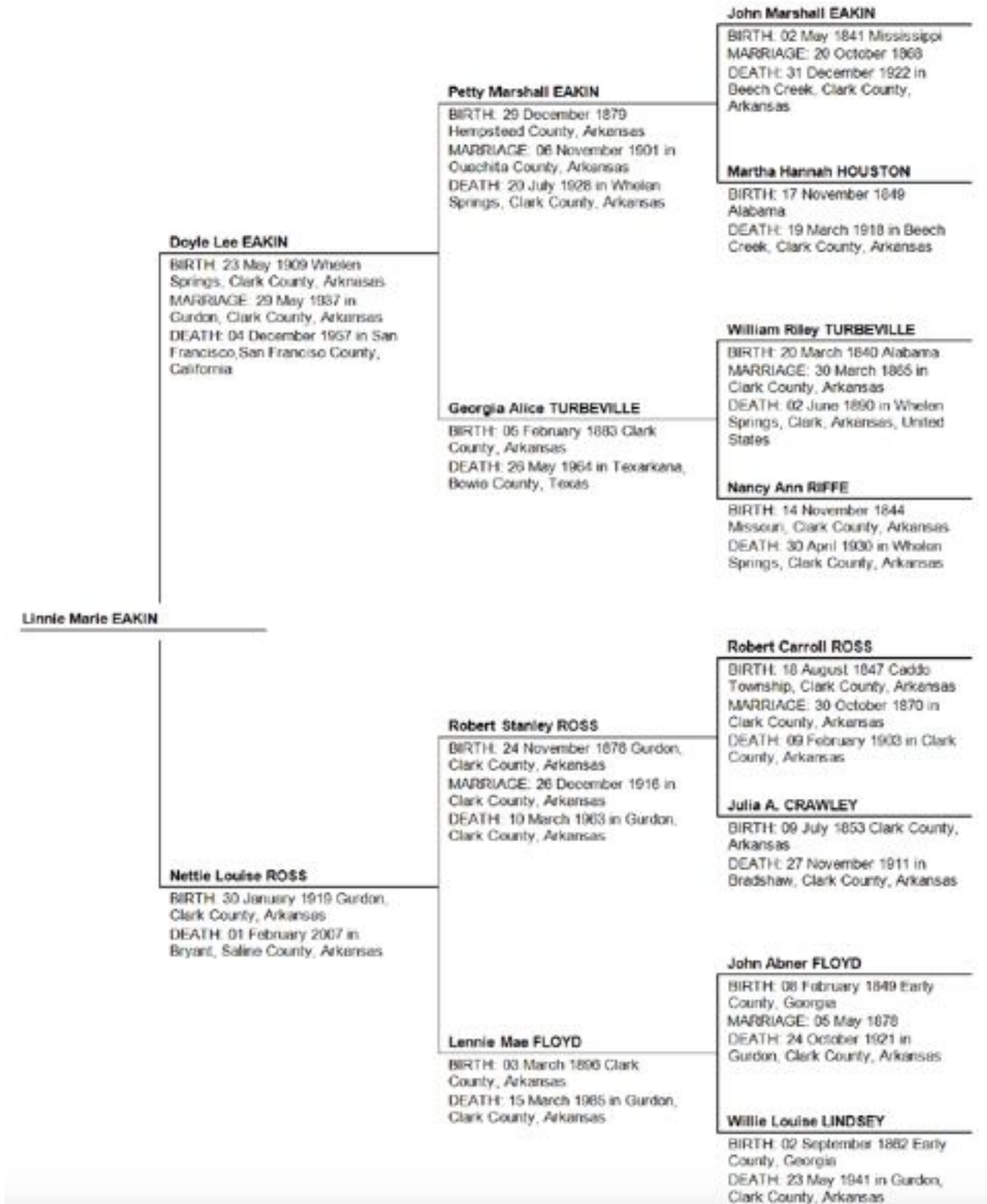
Telephone 790

OLYMPIA, WASH.

# Nancy Neville's 4-Generation Chart



# Lin Watson nee Eakin 4-Generation Chart





**OLYMPIA GENEALOGICAL SOCIETY  
APPLICATION FOR MEMBERSHIP/  
MEMBERSHIP RENEWAL**

Name: \_\_\_\_\_

Maiden Surname: \_\_\_\_\_ Spouse's Name: \_\_\_\_\_

Address: \_\_\_\_\_

City: \_\_\_\_\_ State: \_\_\_\_\_ Zip+4: \_\_\_\_\_

Telephone: (\_\_\_\_\_) \_\_\_\_\_

E-mail: \_\_\_\_\_

Do you need a ride to the meetings? \_\_\_\_\_

Single Membership     \$20.00 per year (Membership year is from Sep 1 to Aug 31)

Family (one newsletter) \$25.00 per year

OGS Membership Pin     \$7.50 each

New Membership \_\_\_\_\_ Renewal \_\_\_\_\_ Reinstatement \_\_\_\_\_

Please enclose S.A.S.E. if you want a receipt and membership card mailed.

You can pay at the meeting or send this form and a check (payable to OGS) to:	<b>Olympia Genealogical Society</b> <b>Attn: Jim Haran, Treasurer</b> <b>P.O. Box 1313</b> <b>Olympia, WA 98507-1313</b>
---	---

## **Genealogist's Code of Ethics**

In order to protect the integrity of public records and library books, I am ethically bound and hereby agree:

1. That I will treat with the greatest care and respect all public records and library books which may be made available for my use.
2. That I will speak with courtesy to all employees of a vital records office or of a public library when requesting to see any vital records or library books, and that when finished with such record or book, I shall express my thanks to the person attending to my requests.
3. That I will not tear, erase, mark, or remove any public record or library book and will refrain from mutilating, defacing, or otherwise destroying any part of such public record or library book.
4. That when I have finished viewing any public record or library book, I will return it to the proper or designated place.

This pledge is freely made by me upon penalty of forfeiting my membership in this society.

**OLYMPIA GENEALOGICAL SOCIETY  
PO BOX 1313  
OLYMPIA, WA 98507-1313**