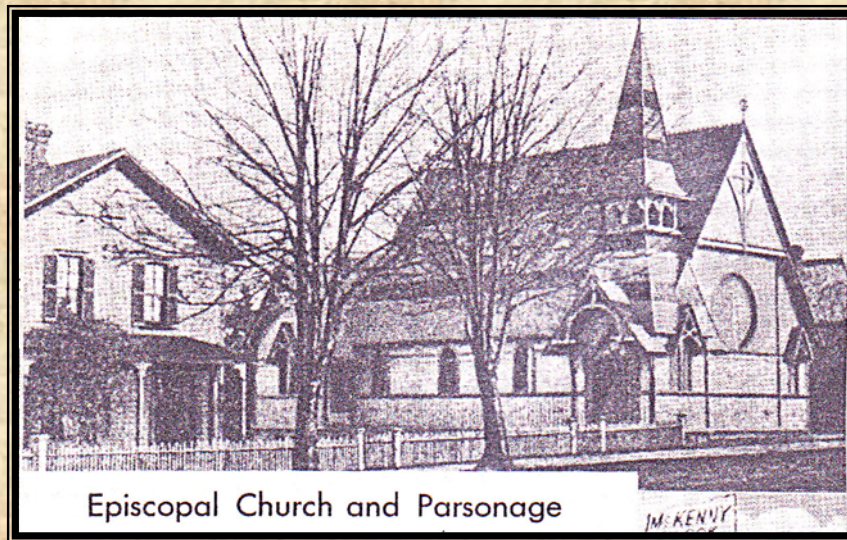




OLYMPIA GENEALOGICAL SOCIETY
QUARTERLY

Volume XXXV, No 4
October 2009



Episcopal Church and Parsonage

Olympia

Washington

SOCIETY OFFICERS AND COMMITTEES

PRESIDENTNORMAN DODGE
 VICE-PRESIDENTPEGGY COOLEY
 SECRETARY.....KERRY MCHUGH UPTON
 TREASURERROGER H. NEWMAN
 PAST PRESIDENT.....PAT HARPER
 HISTORIAN.....RANDI MOE
 GIFTS & MEMORIALS.....JEAN LAWS
 LIBRARY LIAISON.....PAT HARPER
 WEBSITE.....JERRI MCCOY
 FAMILY HISTORY CENTER LIAISON.....CARL & DOROTHY FOLK
 MEMBERSHIP.....KATHLEEN NEWCOMER

PUBLICATIONS

NEWSLETTER EDITOR—MARY LEE KISOR
 QUARTERLY EDITOR—PAT HARPER
 EXCHANGES—JEAN LAWS
 SALES—JERRI MCCOY

PUBLICITY.....DAVID OLSEN
 REFRESHMENTS.....DIANA BARGMANN
 RESEARCH.....ROGER NEWMAN
 SUNSHINE/HOSPITALITYGAYLE STROM
 EDUCATIONANN OLSON
 SEMINAR..... DAVID & KAREN PURTEE

MEETINGS: The Olympia Genealogical Society meets the 2nd Thursday of the month from September to June at 7 p.m. in the Thurston County Court House. Anyone interested is welcome to attend.

QUARTERLY: Articles and information for the Quarterly should be submitted to the editor by the 15th of the month prior to publication. Email material to Pat Harper at rbh25@comcast.net or mail to Quarterly Editor, Olympia Genealogical Society, P.O. Box 1313, Olympia, WA 98507 -1313.



OLYMPIA GENEALOGICAL SOCIETY
Founded 1974

P.O. BOX 1313
Olympia, WA 98507-1313
<http://www.rootsweb.com/~waogs/>
e-mail: OlympiaGenSoc@bigfoot.com
Dues: Single \$20/Year; Family \$25/Year

QUARTERLY Published: January, April, July & October
Vol. XXXV No. 3 July 2009

Pat Harper, Editor

TABLE OF CONTENTS

<u>Article</u>	<u>Page Number</u>
Officers and Board Members.....	1
Coming Events	3
New Genealogy Books at the Olympia Library.....	4
Highlights of the History of St. John's Episcopal Church by Jean Laws.....	13
Thurston County Washington Marriage Packets for 1900..... Transcribed by Jerri McCoy	17
Olympia City Directory 1923-24.....	23
Exchange Notes..... Jean Laws, Editor	29
Publications.....	33



Events of Genealogical Interest

23 Oct 2009 — OGS 35th Anniversary Open House Celebrating Genealogy at the Olympia Timberland Library. Program; Collecting Dead Relatives or What is Genealogy Anyway? Presented by Jerri McCoy.

24 Oct 2009 — Beginning Genealogy Workshop sponsored by OGS & the Olympia Timberland Library.

07 Nov 2009 — Clark County Genealogical Society Fall Seminar: *ABC's of Email & the Net*. Contact CCGS at 360-750-5688 or www.ccgswa.org.

11 Feb 2010 — Olympia Genealogical Society Annual Dinner.

17 April 2010 — Olympia Genealogical Society Spring Seminar: John Colletta on Immigration and Lesser Known Federal Records.

New Genealogy Books
at the
Olympia Timberland Library

Library Liaison Pat Harper
pharper@trlib.org

The Olympia Timberland Library houses and maintains books and other materials of a genealogical nature donated and purchased by the Olympia Genealogical Society and its members. These books are in the Timberland Regional Library Catalog at www.trlib.org



2009 July- September New Genealogy Books at the Olympia Library

From the Library of Caroline Hartsuck Wright

Ye Kingdome of Accawmacke or the Eastern Shore of Virginia in the Seventeenth Century by Jennings Cropper Wise.
Genealogy 975 WISE 1990

Biographical and Portrait Cyclopedia of Cumberland, York and Adams Counties, Pennsylvania with new index edited by Samuel T. Wiley. Genealogy 974.8 BIOGRAPH 1986

Abstracts of Charles county Maryland court and Land Records 1658-1666 vol. 1 by Elise Greenup Jourdan.
Genealogy 975.2 JOURDAN 1993

Marriages and Deaths from Baltimore Newspapers, 1796-1816 by Robert Barnes.
Genealogy 975.2 BARNES 1978

Abstracts of Bucks county, Pennsylvania wills 1785-1825 by F. Edward Wright.
Genealogy 974.8 ABSTRACT 1998

Mayflower Descendants and Their Marriages for Two Generations after the Landing by John T. Landis.
Genealogy 973 LANDIS 1990

Index to Administration Account Records of Frederick County, Maryland 1750-1816 by L. Tilden Moore.
Genealogy 975.2 MOORE 1996

Wills of Delaware County, Pennsylvania 1789-1835 compiled by Robert G. Swift.
Genealogy 974.8 SWIFT 1998

Early Friends Families of Upper Bucks with some account of their descendants by Clarence V. Roberts.
Genealogy 974.8 ROBERTS 1925

Guide to the Records of Philadelphia Yearly Meeting compiled by Jack Eckert.
Genealogy 929.0216 PHILADEL 1989

History of the Pan-Handle; being Historical Collections of the Counties of Ohio, Brooke, Marshall and Hancock, West Virginia edited by J. H. Newton. Genealogy 975.4 NEWTON 1990

American Genealogical Research at the DAR, Washington,DC by Eric G. Grundset & Steven B. Rhodes.
Genealogy 929.1 GRUNDSET 1997

New Genealogy Books continued

Maryland Public Service Records 1775-1783 by Henry C. Peden, Jr.
Genealogy 975.2 PEDEN 1997

United States Direct Tax of 1798; Tax Lists for Washington County, Pennsylvania by Wilbur J. McElwain.
Genealogy 974.8 MCELWAIN 1997

Abstract of Early Kentucky Wills and Inventories copied from the original & recorded wills and inventories
by J. Estelle Stewart King. Genealogy 976.9 KING 1993

Genealogical Gleanings in England with the addition of Genealogical Gleanings in England, new series vols. 1 by Henry F. Waters. Genealogy 942 WATERS 1969

Pioneers of Old Monocacy: the early settlement of Frederick County, Maryland 1721-1743 by Grace L. Tracey & John P. Dern. Genealogy 975.2 TRACEY 1987

Revolutionary Patriots of Maryland, 1775-1783; second supplement by Henry C. Peden, Jr.
Genealogy 975.2 PEDEN 2002

Index to Scharf's History of Western Maryland vols. I & II by Helen Long.
Genealogy 975.2 LONG 1995

Maryland Revolutionary Records by Harry Wright Newman.
Genealogy 975.2 NEWMAN 1993

Index and Summary to connected Draft Maps: North Codorus Township, York County, Pennsylvania by Neal Otto Hively.
974.8 HIVELY 1991

Index and Summary to Connected Draft Maps: Codorus Township, York County, Pennsylvania by Neal Otto Hively. 974.8
HIVELY 1988

Provincial Families of Maryland, vol. 1 compiled under the direction of Vernon L. Skinner, Jr.
Genealogy 975.2 PROVINCIAL 1998

Surname Index to 71 Fayette County, Pennsylvania Cemeteries compiled by Shirley G. McQuillis & William L. Iscrupe.
Genealogy 974.8 MCQUILLI 1980

Fayette County, Pennsylvania Newspaper Extracts 1805-1854 by Jean R. Rentmeister.
Genealogy 974.8 RENTMEIS 1981

Westmoreland in 1783; Westmoreland County, Pennsylvania compiled by Shirley G. McQuillis.
Genealogy 974.8 MCQUILLI 1983

Persons naturalized in the province of Pennsylvania 1740-1773, indexed edition.
Genealogy 974.8 PERSONS 1967

Scottish Local History an introductory guide by David Moody.
Genealogy 941.1 MOODY 1990

History and Roster of Maryland Volunteers War of 1861-1865 vols. 1 & 2, prepared under the authority of the General Assembly of Maryland. Genealogy 975.2 HISTORY 1987

Emigrants from England to the American Colonies 1773-1776 by Peter Wilson Coldham.
Genealogy 941 COLDHAM 1988

Ulster Emigration to Colonial America 1718-1775 by R. J. Dickson. Genealogy 973 DICKSON 1966

New Genealogy Books continued

New England Families vols. 1-4 by William Richard Cutter.
Genealogy 974 CUTTER 1994

Methodist Records of Baltimore City, Maryland vol. 1 1799-1829 & vol. 3 1840-1850 by Henry C. Peden, Jr.
Genealogy 975.2 PEDEN 1994

American Ancestry: Giving the Name and Descent in the Male Line of Americans Whose Ancestors Settled in the United States Previous to the Declaration of Independence A.D. 1776 vols. I-III, VII-IX & X-XII.
Genealogy 973 AMERICAN 1998

Founders and Patriots of America Index by the National Society of Founders and Patriots of America
Genealogy 929.016 NATIONAL 1989

Anne Arundel County Church Records of the 17th and 18th Centuries by F. Edward Wright
Genealogy 975.2 WRIGHT 1994

Abstracts from the Land Records of Dorchester County Maryland vol. A 1669-1690; vol. B 1689-1733; vol. C 1732-1745; vol. D 1740-1756; vol. E 1756-1763; vol. F 1763-1767; vol. H 1771-1782; vol. I 1782-1790; vol. G 1976- 1771; vol. J 1790-1795; vol. K 1795-1799; vol. L 1799-1891 by James A. McAllister, Jr.
Genealogy 975.2 MCALLIST 1960-

Talbot County, Maryland Wills Liber #3 1777-1784; 1784-1789; 1790-1794; Liber JP #5 1794-1801; Libers JP #6 & #7 1808-1812; Libers JP #7 1813-1817; Libers JP #7 & 8 1818-1822; Libers JP #8 1823-1829.
by Leslie and Neil Keddie. Genealogy 975.2 KEDDIE 2001

Land Office Talbot County Rent Rolls 1733-1755 47, TA, i of Tracts: Folios 1-60 vol. 1; Folios 61-125 vol. 2 abstracted by Leslie & Neil Keddie. Genealogy 975.2 KEDDIE 2001

Talbot County court Proceedings vol. 1 1662-1671; vol. 2 1671-1675 abstracted by Leslie & Neil Keddie.
Genealogy 975.2 KEDDIE 1998

Queen Anne's County, Maryland Orphans' Court & Registrar of Wills Liber B 1707-1722; 1723-1738; Libers JE #2 1739-1747; Libers JE #2 & WHN #1 1748-1754; Libers WHB #1 1755-1763 abstracted by Leslie & Neil Keddie. Genealogy 975.2 KEDDIE 2001

Colonial Families of the Eastern Shore of Maryland Vols. 4, 5, 9, 11,13, 14, 15, 16 & 17 by Henry C. Peden, Jr. & F. Edward Wright. Genealogy 975.2 COLONIAL 1998-2000

Maryland Eastern Shore Vital Records Book 5 1801-1825 by F. Edward Wright.
Genealogy 975.2 WRIGHT 1986

1783 Tax List of Baltimore County, Maryland abstracted by Robert W. Barnes & Bettie Stirling Carothers.
Maps by George J. Horvath, Jr. Genealogy 975.2 BARNES 1995

Marylanders to Carolina: Migration of Marylanders to North Carolina & South Carolina Prior to 1800
by Henry C. Peden, Jr. Genealogy 975.2 PEDEN 1994

More Marylanders to Carolina: Migration of Marylanders to North Carolina and South Carolina prior to 1800
by Henry C. Peden, Jr. Genealogy 975.2 PEDEN 1999

Wills of Chester County, Pennsylvania 1713-1766 Vols. 1 & 2 based on the abstracts of Jacob Martin.
Genealogy 974.8 MARTIN 1993-1994

William Penn and the Dutch Quaker Migration to Pennsylvania by William I. Hull
Genealogy 974.8 HULL 1990

New Genealogy Books continued

Abstracts from Ben Franklin's Pennsylvania Gazette, 1728-1748 by Kenneth Scott
Genealogy 974.8 SCOTT 1975

Some Early Emigrants to America, also Early Emigrants to America from Liverpool
Genealogy 973 NICHOLS 1989

Marriage Licenses of Frederick County 1778-1810 by Margaret E. Myers
Genealogy 975.2 MYERS 1986

Welsh Tract of Pennsylvania the Early Settlers extracted by Charles H. Browning.
Genealogy 974.8 BROWNING 1990

Eminent Welshmen: a short biographical dictionary of Welshmen by T. R. Roberts.
Genealogy 942.9 ROBERTS 1995

National Intelligencer Newspaper Abstracts, vol. 6 1821-1823, vol. 7, 1824-1826, vol. 8, 1827-1829 by Joan M. Dixon
Genealogy 975.3 DIXON 1998-1999

National Intelligencer & Washington Advertiser Newspaper Abstracts, vol. 1, 1800-1805, vol. 2, 1806-1810 by Joan M. Dixon.
Genealogy 975.3 DIXON 1996

Newspaper Abstracts of Frederick County, vol. 1, 1811-1815, vol. 2, 1816-1819 by F. Edward Wright.
Genealogy 975.2 WRIGHT 1992-

Frederick County Maryland Land Records vol. 1, Liber B Abstracts, 1748-1752 and vol. 2, Liber E Abstracts, 1752-1756.
Genealogy 975.2 ANDERSON 1995

Clark County Washington Cemetery Records, vol. 4, Washougal, Gardner (Hayes), Sacred Heart, Elim Lutheran, Amboy, Buncombe Hollow, Lewisville, Venersberg, Livingston, and Mountain View published by the Clark County Genealogical Society.
Genealogy 979.786 CLARK-CO 1987

Quiet Adventurers in Canada by Marion Turk. Genealogy 971 TURK 1993

Swiss and German Pioneer Settlers of southeastern Pennsylvania by H. Frank Eshleman.
Genealogy 974.8 ESHLEMAN 1991

Index of Maryland Colonial Wills, 1634-1777 compiled by James M. Magruder, Jr.
Genealogy 975.2 MAGRUDER 1985

Names in Stone: 75,000 Cemetery Inscriptions from Frederick County, Maryland vols. 1 & 2 by Jacob Mehrling Holdcraft. Genealogy 975.2 HOLDCRAF 1985

Northampton County Virginia Record Book: Deeds, Wills etc vol. 7 1657-1666 edited by Dr. Howard Mackey & Candy McMahan Perry. Genealogy 975.5 NORTHAMP 2002

Orderly Book of the Maryland Loyalists Regiment compiled by Caleb Jones & edited by Paul Leicester Ford. Genealogy 929.133 MARYLAND 1996

Early Charles county Maryland Settlers 1658-1745 by Marlene Strawser Bates & F. Edward Wright.
Genealogy 975.2 BATES 1995

Welsh Founders of Pennsylvania by Thomas Allen Glenn. Two vols. in one.
Genealogy 974.8 GLENN 1991

New Genealogy Books continued

Bucks county, Pennsylvania Church Records of the 17th and 18th Centuries vol. 4 by F. Edward Wright.
Genealogy 974.8 WRIGHT 2003

Abstracts of Bucks County, Pennsylvania Land Records 1684-1723 compiled by Charlotte D. Meldrum.
Genealogy 974.8 MELDRUM 1995

This Was the Life: Excerpts from the Judgment Records of Frederick County, Maryland, 1748-1765
by Millard Milburn Rice. Genealogy 975.2 RICE 1984

Transcript of Three Registers of Passengers From Great Yarmouth to Holland and New England 1637-1639
by Charles Boardman Jewson. Genealogy 941 JEWSON 1990

Bucks County, Pennsylvania Church Records of the 17th and 18th Centuries, vol. 1, German Church Records
by F. Edward Wright. Genealogy 974.8 WRIGHT 1994

Early Church Records of Delaware County, Pennsylvania vol. 1, vol. 2 & vol. 3 (Welsh Tract) by John Pitts Launey,
F. Edward Wright and Henry C. Peden, Jr.
Genealogy 974.8 LAUNEY 1997

Bucks County Tax Records 1693-1778 compiled by Terry A. McNealy & Frances Wise Waite.
Genealogy 974.8 MCNEALY 1982

Somerset County, Maryland Rent Rolls, 1663-1723 transcribed by Ruth T. Dryden.
Genealogy 975.2 DRYDEN 1992

Parish of Somerset: Records of Somerset County Maryland by Ruth T. Dryden.
Genealogy 975.2 DRYDEN 1987

Public Records of the Colony of Connecticut Prior to the Union with New Haven Colony, May 1665, vol. 1
by J. Hammond Trumbull. Genealogy 974.6 PUBLIC-R 1992

Mercer County, Pennsylvania Willbook Index, 1804-1900 compiled by Dr. James K. Sewall.
Genealogy 974.8 SEWALL 1992

Jefferson County, Pennsylvania Willbook, 1852-1906 compiled by Nancy C. Hidinger.
Genealogy 974.8 HIDINGER 1983

Index to Armstrong County, PA Wills, 1805-1900 compiled by Diana Bowman.
Genealogy 974.8 BOWMAN 1987

Early Families of Frederick County, Maryland and Adams County, Pennsylvania by Steve Gilland.
Genealogy 974.8 GILLAND 1997

Index to Allegheny County, PA Wills, 1789-1869 compiled by Bob and Mary Closson
Genealogy 974.8 CLOSSON 1979

Index to Fayette Co., PA Wills, 1783-1900 compiled by Bob and Mary Closson.
Genealogy 974.8 CLOSSON 1980

Estate Inventories: How to Use Them by Kenneth L. Smith.
Genealogy 929 SMITH 1984

New Genealogy Books continued

Index to Somerset County, PA Wills, 1795-1900 compiled by Bob and Mary Closson
Genealogy 974.8 CLOSSON 1984

Index to York County, PA Wills 1749-1900 compiled by Closson Press.
Genealogy 974.8 CLOSSON 1990

Pennsylvania Births, Delaware County, 1682-1800 by John T. Humphrey.
Genealogy 974.8 HUMPHREY 1965

Pennsylvania Births, Lancaster County, 1723-1777 by John T. Humphrey.
Genealogy 974.8 HUMPHREY 1997

Pennsylvania Births, Lancaster County, 1778-1800 by John T. Humphrey.
Genealogy 974.8 HUMPHREY 1997

Abstracts of the Administration Accounts of the Prerogative Court of Maryland vol. 3, Libers 11-15, 1731-1737 by V.L. Skinner, Jr. Genealogy 975.2 SKINNER 1996

Index to Butler Co., PA Wills 1800-1900 compiled by Bob and Mary Closson.
Genealogy 974.8 CLOSSON 1985

Index to Beaver County, PA Wills 1800-1900 compiled by Bob and Mary Closson.
Genealogy 974.8 IDEX-TO 1988

Index to Indiana County, PA Wills 1803-1900 compiled by Bob and Mary Closson.
Genealogy 974.8 CLOSSON 1982

Will Abstracts of Northampton County, PA 1752-1802 compiled by John Eyerman.
Genealogy 974.8 EYERMAN 1982

1783 Tax Lists and the 1790 Federal Census for Washington County, Pennsylvania compiled by Katherine K. Zinsser and Raymond M. Bell. Genealogy 974.8 ZINSSER 1988

Revolutionary Patriots of Frederick County, Maryland 1775-1783 by Henry C. Peden, Jr.
Genealogy 975.2 PEDEN 1995

Revolutionary Patriots of Worcester & Somerset Counties, Maryland 1775-1783 by Henry C. Peden, Jr.
Genealogy 975.2 PEDEN 1999

York County, Pennsylvania Church Records of the 18th Century, vol. 3 by Marlene S. Bates & F. Edward Wright
Genealogy 974.8 BATES 1991

Directory of Scots Banished to the American Plantations 1650-1775 by David Dobson.
Genealogy 941.1 DOBSON 1983

Vital Records of the Towns of Barnstable and Sandwich by Col. Leonard H. Smith Jr. & Norma H. Smith.
Genealogy 974.4 VITAL-RE 1992

Vital Records of the Towns of Eastham and Orleans by Col. Leonard H. Smith Jr. & Norma H. Smith.
Genealogy 974.4 VITAL-RE 1993

Vital Records of the Town of Fairhaven, Massachusetts to 1850 by Col. Leonard H. Smith Jr. & Norma H. Smith. Genealogy 974.4 VITAL-RE 1993

New Genealogy Books continued

Vital Records of the Town of Middleborough by Col. Leonard H. Smith Jr. & Norma H. Smith.
Genealogy 974.4 VITAL-RE 1993

Vital Records of the Town of Plymouth by Col. Leonard H. Smith Jr.
Genealogy 974.4 VITAL-RE 1992

Vital Records of Kent and Sussex Counties Delaware 1686-1800 by F. Edward Wright.
Genealogy 975.2 WRIGHT 1994

Early Quaker Records in Virginia compiled by Miles White, Jr.
Genealogy 975.5 WHITE 1989

Revolutionary Patriots of Caroline County, Maryland 1775-1783 by Henry C. Peden, Jr.
Genealogy 975.2 PEDEN 1998

Revolutionary Patriots of Dorchester County, Maryland 1775-1783 by Henry C. Peden, Jr.
Genealogy 975.5 PEDEN 1998

Revolutionary Patriots of Talbot County, Maryland 1775-1783 by Henry C. Peden, Jr.
Genealogy 975.2 PEDEN 1998

Revolutionary Patriots of Baltimore Town and Baltimore County, Maryland 1775-83 by Henry C. Peden, Jr.
Genealogy 975.2 PEDEN 1997

Roster of the People of Revolutionary Monmouth County [New Jersey] by Michael S. Adelberg.
Genealogy 974.9 ADELBERG 1997

Revolutionary Patriots of Anne Arundel county, Maryland by Henry C. Peden, Jr.
Genealogy 975.2 PEDEN 1992

Merion in the Welsh Tract with Sketches of the Townships of Haverford and Radnor by Thomas Allen Glenn.
Genealogy 974.8 GLENN 1992

Tax List of Chester County 1768 from the Pennsylvania Archives, Third Series.
Genealogy 974.8 TAX-LIST 1989

Hartsock Heritage: A Three Hundred Year Chronicle of the Hartsock Family of southwest Virginia by Barnett W. McConnell, Jr. Genealogy 929.2 HARTSOCK 1999

Land Records of Somerset County, Maryland by Ruth T. Dryden.
Genealogy 975.2 DRYDEN 1992

Records of the First Church of Wareham, Massachusetts 1739-1891 by Col. Leonard H. Smith, Jr. and Norma H. Smith.
Genealogy 974.4 FIRST-CH 1993

Quaker Records of Henrico Monthly Meeting and Other Church Records of Henrico, New Kent and Charles City Counties, Virginia by F. Edward Wright. Genealogy 975.5 WRIGHT 2002

Quaker Arrivals at Philadelphia 1682-1750 by Albert Cook Myers.
Genealogy 974.8 MYERS 1997

Record of Interments at the Friends Burial Ground Baltimore, Maryland (est. 1681) researched & compiled by E. Erick Hoopes; edited by Christina Hoopes. Genealogy 975.2 HOOPES

New Genealogy Books continued

Biographical Annals of Franklin county Pennsylvania vol. 2. Genealogy 974.8 BIOGRAPH 1992

Maryland Eastern Shore Vital Records Books 2& 4 by F. Edward Wright.
Genealogy 975.2 WRIGHT 1985

Supplement to Maryland Eastern Shore Vital Records; Books 1-3 by F. Edward Wright.
Genealogy 975.2 WRIGHT 2001

Irish Gravestone Inscriptions: A Guide to Sources in Ulster edited by William O'Kane & Eoin Kerr.
Genealogy 941.5 OKANE 1999

Cymry of '76 or Welshmen and Their Descendants of the American Revolution by Samuel Jenkins.
Genealogy 929.133 JONES 1989

Early Families of Southern Maryland vol. 1; vol. 2; vol. 3; vol. 5; vol. 6; vol. 7 by Elise Greenup Jourdan.
Genealogy 975.2 JOURDAN 1993

Maryland Records Colonial, Revolutionary, County and Church from Original Sources by Gaius Marcus Brumbaugh. Genealogy 975.2 BRUMBAUGH 1993

Scotch-Irish vols. 1 & 2 by Charles A. Hanna. Genealogy 941 HANNA 1995

Colonial and Revolutionary Families of Pennsylvania vols. 1, 2 & 3 by John w. Jordan.
Genealogy 974.8 COLONIAL 1978

Worcester County Wills: Will Book MH 3 1666-1742 abstracted by V. L. Skinner, Jr.
Genealogy 975.2 WORCESTE 1988

Worcester County Wills vol. 1; 1742-1758 & vol. 2; 1759-1769 by Sharon A. Jones.
Genealogy 975.2 JONES 1986-1987

Worcester County Maryland Wills 1769-83 JW 4 vol. 3 JWB vol. 5 abstracted by Ruth T. Dryden.
Genealogy 975.2 WORCESTE 1989

Worcester County Maryland Administrators Bonds and Inventories 1783-1790 by Ruth T. Dryden.
975.2 DRYDEN 1991

Worcester County Maryland Will Book JW-13 vol. 4 1783-1790 by David V. Heise.
Genealogy 975.2 WORCESTER 1991

Index to District of Columbia Wills 1801-1920 prepared by Dorothy S. Provine.
Genealogy 975.3 PROVINE 1992

Guide to the Records of Your District of Columbia Ancestors by Eleanor M. V. Cook.
Genealogy 975.3 COOK 1990

Commander-in-Chief's Guard; Revolutionary War by Carlos E. Godfrey.
Genealogy 973.133 COMMANDE 1972

1800 Census of Calvert County and Charles County, Maryland . Genealogy 975.2 CALVERT 1965

Land Records of Worcester County, Maryland 1666-1810 by Ruth T. Dryden.
Genealogy 975.2 DRYDEN 1992

New Genealogy Books continued

Master Book of Irish Surnames; location, ethnicity, spellings & sources by Michael C. O'Laughlin.
Genealogy 929.1092 OLAUGHLI 1993

Monocacy and Catoctin vols. II & III edited by C. E. Schildknecht. Genealogy 975.2 MONOCACY 1989
Ulster Sails West: The Story of the Great Emigration from Ulster to North America in the 18th Century
by William F. Marshall. Genealogy 914.5 MARSHALL 1977

Virginia Will Records from the Virginia Magazine of History & Biography, the William and Mary College Quarterly, and Tyler's Quarterly Indexed by Judith McGhan. Genealogy 975.5 VIRGINIA 1982

Lineages of Members of the National Society of the Sons and Daughters of the Pilgrims vol. 2 1929-1952
Genealogy 973 NATIONAL 1988

Colonial families of Delaware vols 1,2, 3, 4 & 5 by F. Edward Wright. Genealogy 971.1 WRIGHT 1998-2002

Catalogue of the Names of the First Puritan Settlers of the Colony of Connecticut with the time of their arrival in the Colony
by R. R. Hinman. Genealogy 974.6 HINMAN 1994

Judgment Records of Dorchester, Queen Anne's & Talbot Counties by F. Edward Wright.
Genealogy 975.2 WRIGHT 2001

Genealogical Abstracts from the American Weekly Mercury 1719-1746 compiled by Kenneth Scott.
Genealogy 974.8 GENEALOG 1995

Marylanders and Delawareans in the French and Indian War 1756-1763 by Henry C. Peden, Jr.
Genealogy 975.2 PEDEN 2004

Bucks County Pennsylvania Deed Records 1684-1763 by John David Davis.
Genealogy 974.8 DAVIS 1997

Chronicles of the First Planters of the Colony of Massachusetts Bay, from 1623-1636 by Alexander Young.
Genealogy 974.4 YOUNG 1975

Land Laws of Pennsylvania by Thomas Sergeant. Genealogy 974.8 SERGEANT 1838

Marylanders in the Confederacy by Daniel D. Hartzler. Genealogy 975.2 HARTZLER 1994

Colonial Families of Anne Arundel County, Maryland by Robert Barnes. Genealogy 975.2 BARNES 1996

1776 Census of Maryland compiled by Bettie Stirling Carothers. Genealogy 975.2 CAROTHER 1992

Purchased by Timberland Regional Libraries
Social Networking for Genealogists by Drew Smith.
Genealogy 929.1 SMITH 2009

German Church Books: Beyond the Basics by Kenneth L. Smith.
Genealogy 943 SMITH 1990

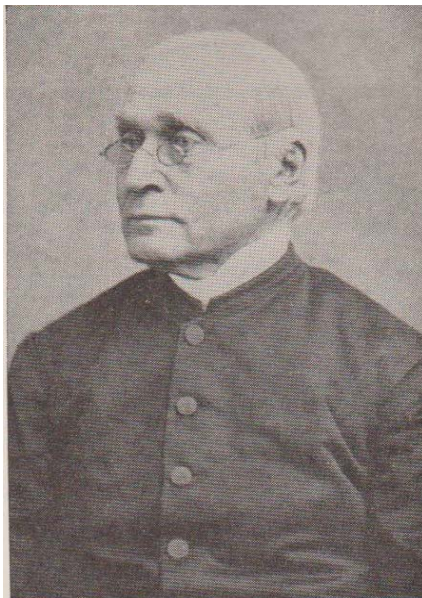
Washington Granges Celebrate a Century by Gus Norwood.
Northwest Reference 338.106 NORWOOD 1988

Highlights from a History of St. John's Episcopal Church,
Olympia, Washington
by Jean Laws

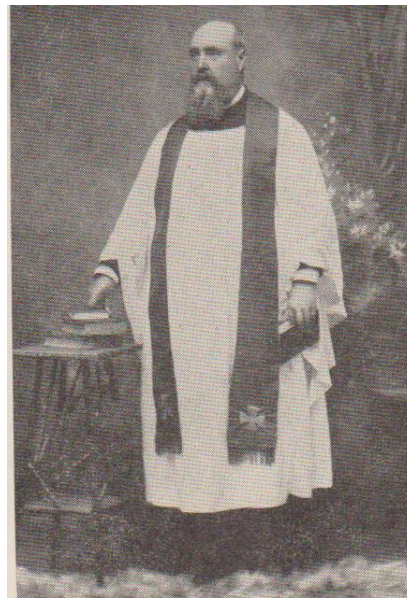
Having been a member since we moved here in 1975, I know that St John's has played an important part in the history and people of this area. While working in the office I found a booklet which summarized this history and decided to include some of it and the people in this history. The booklet is called "St. John's Church of Olympia (1853-1941) A Brief History Compiled Upon the Occasion of the Parochial Diamond Jubilee" by Rev Thomas Edwin Jessett M. A. Rector. First Church Consecrated September 3, 1865. Parish Formally Organized April 2, 1866. Diamond Jubilee Sep 1940-April 1941.

Rev. Jessett states at the beginning that "St. John's Church of Olympia was the first incorporated parish of the Protestant Episcopal Church in the United States of America to be formed in what is now the State of Washington. It was also one of the first places at which services of the Church were held."

In Jan, 1853, the newly appointed Chaplain at Ft. Vancouver. Rev. John D McCarthy D D visited Olympia and officiated twice at services on Jan 29th. and found a sufficient number of persons acquainted with the Church. He became the chaplain at Steilacoom and held services once a month in Olympia until 1860. Services were held in the Hall of the House of Representatives and a school house.



REV. JOHN D. McCARTHY, D. D.
First Missionary



REV. PETER EDWARD HYLAND
First Rector

In June of 1860 the first regularly appointed missionary was Rev D. Ellis Willes, who held services regularly in the Methodist Chapel, the first church building in Olympia. His first recorded act was the baptism of George Savage, infant son of Rudolph M and Kate L Walker on July 8, 1860.

Here is a list of Clergyman from 1853-1941 when this booklet was written:

Missionaries

1. 1853-1860 Rev. John D. McCarthy D. D.
2. 1860-1861 Rev. D. Ellis Willes
3. 1861-1862 Rev. Daniel Kendig
4. 1865-1866 Rev. Peter Edward Hyland.

Rectors of the Parish

1. 1866-1871 Rev. Peter Edwin Hyland
2. 1872-1873 Rev. Thomas E. Dickey
3. 1875-1876 Rev. Charles L. Fischer
4. 1878-1881 Rev. Alfred M. Abel
5. 1882-1883 Rev. Earnest Edward Wood
6. 1883-1886 Rev. Reuben Denton Nevius D. D.
7. 1888-1892 Rev. Horace Hall Buck
8. 1893-1896 Rev. Rufus R Chase
9. 1897-1903 Rev. Henry L Badger
10. 1903-1906 Rev. Frederick Kendall Howard
11. 1906-1907 Rev. Taylor Griffith
12. 1908-1912 Rev. Gerald R Messias
13. 1912-1917 Rev. Cameron Swazey Morrison
14. 1917-1933 Rev. Richard Franklin Hart
15. 1934-1939 Rev. Elmer B Christie
16. 1939- Rev. Thomas Edwin Jessett.

On Nov. 4, 1860, the first confirmations were Mrs. Catherine Maria Gosnell and Mrs. Samuel W Percival . On Nov. 20 the first marriage was Myrick Folsom of Sawamish Co. (now Mason) and Miss Anna B Hutchinson of San Francisco Ca. The first recorded burial was on Aug. 23, 1860, of Geo. Huber of Port Townsend age 23. The first congregation were the families of General George Tilton; Edmund Sylvester; Samuel W Percival; Benjamin Harned; R W Walker; James R Wood; Richard H Lane; James Holman; James Offat; Mr. Baldwin; Mr. Durgan; Mr. Burmeister; Mr. Head ; Joseph Deaves of Wood Prairie. On Dec. 20 and 21 1860, the ladies "Sewing Society" held a fair in Washington Hall , a part of Silas Galliher's hotel, at which "Dr. Eggers' Brass Band discoursed sweet music" according to the Washington Standard.

On Jan. 7 1864, the Washington Territory Legislature passed an act to incorporate St. Johns. Lot 7 Block 7 on the corner of 7th and Main (now Capitol Way) was purchased from Benjamin and Eliza P Harned for \$500. This is partly where the Governor House now stands.

In June 1865 the Rev Hyland came and his first official act was the marriage of Andrew J. Burt and Mrs. Martha Woodruff on Aug 6. On Sep. 2, he baptized Mary Jane infant daughter of William and Julia Trout.

The church was regularly consecrated by the right Rev. Thomas F Scott on Sep. 3, 1865, and 2 persons, Mrs. Robert Frost and Mrs. Charles (Martha) Grainger were confirmed. Also that day, Rev Hyland married William Glendenning of Seattle to Jane Connor of Olympia.

“Accompanying the above was a most generous supply of wine and cake. As we regretfully gaze at the empty bottles and the remnants of the bridal loaf we waft them out best wishes for happiness” said the Washington Standard of Sep. 9 of this event.

On Easter Monday, April 2, 1866, St John’s became the oldest incorporated parish in the state of Washington when a meeting of the congregation was held and the parish formally constituted. The Rev Peter E Hyland was the rector, and the following were on the vestry: Sam W Percival, and William Pickering, wardens. and James R Wood, Robert Frost, Frank Henry, Richard Lane, Benjamin Harned and John L Head as vestrymen.

In 1870 Mrs. T. F. McElroy organized her Sunday School class of girls into “The Busy Bees.” An old tintype taken about 1873 shows: Mrs. T F McElroy, Eliza P Ferry (Mrs. John Leary), Georgiana Percival (Mrs. T. N. Ford), Anna Knighton (Mrs. Harrington), May Pendergast, Fanny Steele (Mrs. R. G. O’Brien) and Belle Evans (Mrs. Wilkerson).



“THE BUSY BEES,” 1873—*Standing:* Anna Knighton, May Pendergast, Fanny Steele, Belle Evans. *Seated:* Georgiana Percival, Mrs. T. F. McElvov, Eliza P. Ferry.

On March 23, 1875, at a meeting of “The Dime & Sewing Society” Mr. O’Brien introduced the subject of “employing a sexton for the Church to ring the Bell, make fires and light the lamps: the Busy Bees generously offering to keep the Church clean.” In 1878 a rectory was built by James Stewart at a cost of \$1800 gold coin raised by “The Dime Society” and the “Busy Bees.” Mrs. Rebecca Howard, a well-known Olympia hotel-keeper and a faithful communicant and liberal supporter of St John’s died July 12, 1881. The following story was told about her: “Upon one of his visits Bishop Morris brought Mrs. Morris and two of his sisters-in-law to the service. Mrs. Morris and her sisters took a pew which happened to be the one always occupied by Mrs. Howard. A few minutes later Mrs. Howard came in, dressed in all her finery and found her pew occupied by strangers. She took a place a few pews away and then turned and stared at Mrs. Morris and her sisters until they, embarrassed, moved into another pew. Mrs. Howard then triumphantly marched into her accustomed place.”

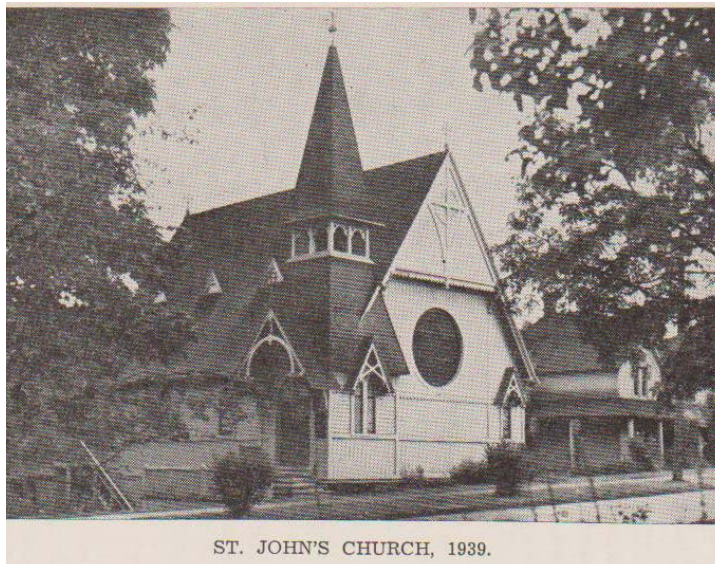
On April 23, 1888, the old church building and its site was sold for \$1500 and plans were made to build a 2nd church. The final cost of the new building was \$10,361.75. and was located at present day Washington & 9th in downtown Olympia. (The Church is now the 1st Baptist church, which still has some of the original furnishings including the beautiful stained glass Rose window which was made in England) The Rector, the Rev Horace Buck, equipped the church by writing to friends in former parishes . Some of these furnishings were the baptismal font of carved oak from St. Thomas church in New Haven Connecticut, and the eagle lectern which was the gift of a former parishioner, Mrs. Fanny Mary Wilkinson of Tacoma, daughter of Judge Elwood Evans. (It is still used in the present and 3rd St John's church which is located at 20th and Capitol.) From the old church came the bell, the stained glass window of St. John and St Mary, and the Bishop's and Rector's chairs which had come around the Horn in earlier days.

The opening of the new church and the dedication of these furnishing was held July 19,1891. The carpet for the chancel and cushions for the pews were supplied by St. John's guild. To raise money for them they made sheets and pillow slips and hemmed curtains for the first Olympian Hotel; bound blankets for the National Guard of Washington ; had teas and garden parties; gave bazaars and excursions. The first marriage in the completed church was April 21, 1892, between John Leary and Eliza P. Ferry.

The years rolled by and many rectors served the church, many of the older members died and changes took place. On June 1, 1939, the Rev Thomas Edwin Jessett, came to St John's from Wenatchee. On Jan. 18, 1940, the mortgage was paid off and was "ceremoniously burnt amidst general rejoicing. At this meeting Mr. Jessett announced the Diamond Jubilee would begin in September and gave the parish a slogan, "Forward in the forties."

One hundred thirty-five persons attended the Diamond Jubilee Loyalty Dinner on Nov. 28, 1940, at the Hotel Olympian. "A three act skit portraying the organization of the corporation, the coming of the Rev. Peter E Hyland, and the formal meeting at which the parish was organized was presented by a group of young married folk in costume and was joyously received. The Rev Elmer B Christie, former rector, was the speaker for the occasion."

A copy of this booklet is available in reference at the Olympia Timberland Library. I have chosen only some of the highlights of this history and some of the events that took place.



Thurston County, Washington Marriage Packets – 1900
[P1900] - Provided by Jerri McCoy

8/4/1900 - P1900 - Lind, John of Little Rock and Anderson, Christina of Little Rock at Olympia by R. M. Hays, Minister. Affidavit of Peter Olsen. Witnesses: P. E. Olson and Selma Olson. Filed 8/4/1900 [License: P1900, #1655 - 8/4/1900]

8/9/1900 - P1900 - Shannon, J. P. of Gr. Forks Gale, B.C., Canada and Vaughan, Huldah of Olympia at Olympia by J. S. McCallum. Affidavit of J. D. McCallen. Witnesses: Neal Cheetham and Linnie W. Wiley. Filed 8/10/1900 [License: P1900, #1656 - 8/9/1900]

8/9/1900 - P1900 - Duff, George W. of Tacoma, WA and Daggett, Alice A. of Sherlock, WA at Olympia by Fred Schouber, JP. Affidavit of Mrs. Anna Wood. Witnesses: Mrs. Anna Wood and Mrs. A. C. Stevens. [License: P1900, #1657 - 8/9/1900]

8/10/1900 - P1900 - Robertson, John W. of Tacoma, WA and Morrison, Mart T. of Tacoma, Pierce Co, WA at Olympia by Fred Schouber, JP. Affidavit of Charles Orange. Witnesses: Chas. E. Orange and Henry Wood, both of Olympia. [License: P1900, #1658 - 8/10/1900]

8/19/1900 - P1900 - Hardisty, Henry A. of Tacoma, WA and Van Deveer, Ida May of Tumwater at Tumwater by A. G. Sawin, Minister, Baptist Church. License issued in Pierce Co. Witnesses: J. C. Hiatt and Anna Van Dever, of Tumwater. Filed 8/20/1900 [License: P1900 - 8/17/1900]

8/20/1900 - P1900 - Darling, Albert M. of Olympia and Sternberg, Emma of Olympia at Olympia by R. M. Hayes, Minister, First Presby. Church. Affidavit of G. S. Prince. Witnesses: L. B. Faulkner and Mrs. L. B. Faulkner. Filed 8/20/1900 [License: P1900, #1659 - 8/20/1900]

8/20/1900 - P1900 - Stubbs, James M. of Gate City and Willette, Mae of Gate City at Olympia by J. S. McCallum. Affidavit of Ralph Parker. Witnesses: Ruth McCallum and Carrie Ford. [License: P1900, #1660 - 8/20/1900]

8/29/1900 - P1900 - Coates, Walter G. of Tacoma, WA and Whitaker, Lillie of Tacoma, WA at Olympia by J. S. McCallum, Minister, Christian Church. Affidavit of Thomas Laughlin. Witnesses: Mrs. S. Laughlin and Lillie Coates. [License: P1900, #1661 - 8/29/1900]

9/5/1900 - P1900 - Kenworthy, Charles A. of Tenino and Hawkins, Jennie F. of Tenino at Centralia, WA by Robert Arkley, Minister. Affidavit of D. G. Cruikshanks. Witnesses: Bel. J. Campbell, of Tenino, and Charley E. Mize, of Bucoda. Filed 5/25/1901 [License: P1900, #1662 - 9/4/1900]

9/12/1900 - P1900 - Bowen, Oscar Sidney of Spokane, WA and Anders, Imogene Claremonte of Olympia at Olympia by Henry L. Badger, Minister. Affidavit of Bergen H. Allen. Witnesses: Bryan R. Allen and Will H. Anderson, both of Olympia. Filed 9/24/1900 [License: P1900, #1663 - 9/12/1900]

9/16/1900 - P1900 - Johnston, Joseph P. of Olympia and Chambers, Annette of Olympia at Olympia by H. P. Saindon. Affidavit of Robert J. Johnston. Witnesses: Robert Johnston and Jennie Chambers. Filed 9/17/1900 [License: P1900, #1664 - 9/15/1900]

9/20/1900 - P1900 - Bloxham, French L. of McMurray, Skagit Co, WA and Giles, Mable C. of Olympia at Olympia by R. M. Hays, Minister. Affidavit of N. F. Murry. Witnesses: Chas. B. Giles and E. Lilla Giles. [License: P1900, #1666 - 9/20/1900]

9/21/1900 - P1900 - Sandberg, Andrew of Olympia and Sandcas, Maria Louisa of Olympia at Olympia by M. E. Anderson, of Tacoma. Affidavit of Chris Donges. Groom's birthday given as March 29. Bride's birthday given as July 13. Witnesses: Julius Nelson and Louis Anderson, both of Olympia. Filed 9/22/1900 [License: P1900, #1667 - 9/20/1900]

Thurston County Marriages continued

9/23/1900 - P1900 - Neylon, Michael of Olympia and Neylon, Nellie M. of Tenino at Olympia by H. P. Saindon, Catholic Priest. Affidavit of Lee Reder. Witnesses: Walter Neylon, of Tenino, and Katie C. Farrell, of Olympia. Filed 9/24/1900 [License: P1900, #1668 - 9/22/1900]

9/30/1900 - P1900 - Waddell, Albert of Rainier and Hewitt, Grace E. of Yelm at Yelm by C. G. Morris, Minister. Affidavit of W. P. Reynolds. Witnesses: Geo. Chambers and Wm. Waddell. Filed 10/3/1900 [License: P1900, #1665 - 9/19/1900]

10/1/1900 - P1900 - Loveland, Harry W. of Portland, Oregon and Sorel, Georgia of Olympia at Olympia by R. M. Hayes, Minister. Affidavit of B. J. Healy. Witnesses: Nora J. Vine and Maggie J. Vine. Filed 10/3/1900 [License: P1900, #1669 - 10/1/1900]

10/3/1900 - P1900 - Clement, Fred I. of Tenino and Miller, Caroline of Little Rock at Olympia by R. M. Hayes, Minister. Affidavit of Joseph Swanton. Witnesses: Mrs. J. C. Robinson and Mrs. Ida R. Gale. Filed 10/3/1900 [License: P1900, #1670 - 10/1/1900]

10/7/1900 - P1900 - Lucas, Robert M. of Olympia and Howard, Nettie May of Olympia at Olympia by J. S. McCallum. Affidavit of Nartin Holsdan. Witnesses: F. S. Howard and Pearl Howard. Filed 11/1/1900 [License: P1900, #1671 - 10/6/1900]

10/9/1900 - P1900 - McDivit, Charles of Seattle and Young, Carrie Inez of Seattle at Olympia by R. M. Hayes, Minister. Affidavit of Gust A. Peterson. Witnesses: Gust Peterson and Josephine Hurd. Filed 10/9/1900 [License: P1900, #1672 - 10/9/1900]

10/14/1900 - P1900 - Sutomish, Gilbert of Chehalis Reservation and Walker, Annie of Chehalis Reservation at Chehalis Reservation by A. Anderson. Affidavit of Jim Walker. Witnesses: Sam Smith and Mary James. Filed 10/16/1900 [License: P1900, #1673 - 10/10/1900]

10/15/1900 - P1900 - Tyrell, Lorenzo of Bucoda and Van Norman, Bessie M. of Bucoda at Bucoda by E. Hopkins, Minister. Affidavit of J. W. Van Norman. Witnesses: Wm. A. Price and Mrs. Wm. A. Price, both of Bucoda. Filed 10/18/1900 [License: P1900, #1674 - 10/11/1900]

10/16/1900 - P1900 - Cummings, Milton of Kamilche, Mason Co, WA and Weaver, Jennie of Mud Bay at Olympia by R. C. Glass, Minister M. E. Church. Affidavit of J. F. Helser. Witnesses: D. R. Helser and Katie Helser. [License: P1900, #1675 - 10/15/1900]

10/25/1900 - P1900 - Pattison, James of Olympia and Saindon, Eleanore of Olympia at Olympia by H. P. Saindon, Catholic Priest. Affidavit of Mrs. S. E. Barr. Witnesses: James R. Dever and Catherine Farrell. [License: P1900, #1676 - 10/24/1900]

10/30/1900 - P1900 - Carmack, George W. of Seattle and Lainsee, Marguerite of San Francisco, California at Olympia by Henry L. Badger, Minister. Affidavit of G. S. Prince. Second marriage for bride. Witnesses: Mrs. Ernes Heardt of San Francisco, and Mrs. Frances Badger of Olympia. [License: P1900, #1678 - 10/30/1900]

11/1/1900 - P1900 - Nelson, John G. of Tenino and Lenox, Lilly B. of Tenino at Olympia by Fred Schouber, JP. Affidavit of G. S. Prince. Second marriage for bride. Witnesses: G. L. Prince and M. E. George, both of Olympia. Filed 11/8/1900 [License: P1900, #1679 - 11/1/1900]

11/4/1900 - P1900 - Sallee, Reuben D. of Little Rock and Sagar, Florence of Little Rock at Little Rock by A. A. Anderson, Minister. Affidavit of Walter L. Brooks. Witnesses: Ira R. Sallee and Pheba J. Sallee. Filed 11/21/1900 [License: P1900, #1677 - 10/29/1900]

Thurston County Marriages continued

11/7/1900 - P1900 - Pease, Horace E. of Olympia and Richardson, Lynne of Shelton, Mason Co, WA at Olympia by Fred Schouber, JP. Affidavit of Fred E. Tucker. Witnesses: Mrs. Fred Tucker and Fred E. Tucker, both of Olympia. Filed 11/8/1900 [License: P1900, #1680 - 11/7/1900]

11/14/1900 - P1900 - McDowell, George A. of Tacoma, WA and Ferguson, Louisa of Tacoma, WA at Olympia by J. S. McCallum. Affidavit of James C. Stanley. Witnesses: James C. Stanley and J. S. McCallum. Filed 11/15/1900 [License: P1900, #1681 - 11/14/1900]

11/17/1900 - P1900 - Doble, Lorenzo of Rainier, WA and Doble, Ann Maria of Rainier Twp, WA at Olympia by Fred Schouber, JP. Affidavit of J. A. Piper. Second marriage for groom. Third marriage for bride. Witnesses: J. A. Piper and A. L. Piper, both of Rainier. Filed 11/19/1900 [License: P1900, #1682 - 11/17/1900]

11/19/1900 - P1900 - Lilly, Daniel F. of Pleasant Glade, Thurston Co and Oston, Blanch of Olympia at Olympia by Fred Schouber, JP. Affidavit of Henry Reder. Witnesses: Henry Reder, of Olympia, and Martha J. Stoll, of Pleasant Glade. Filed 11/19/1900 [License: P1900, #1683 - 11/19/1900]

11/21/1900 - P1900 - Glenn, Frank of Satsop, Chehalis Co, WA and White, Mary L. of Olympia at Olympia by F. S. Pearson, Minister. Affidavit of W. G. White. Witnesses: Y. J. Glenn and Hester Glenn, both of Satsop, WA. Filed 11/22/1900 [License: P1900, #1684 - 11/20/1900]

11/21/1900 - P1900 - Blackwell, John F. of Centralia, Lewis Co, WA and Goodwin, Alice W. of South Union at South Union by Wm. McDonald. Affidavit of C. H. Whipple. Second marriage for bride. Witnesses: A. L. Whipple and M. Pearl Branard. Filed 12/11/1900 [License: P1900, #1686 - 11/21/1900]

11/29/1900 - P1900 - Williston, Wendell L. of Olympia and Hawthorn, A. Myrtle of Olympia at Olympia by J. S. McCallum. Affidavit of C. R. Carroll. Witnesses: R. E. Hawthorn and C. A. Williston. Filed 11/30/1900 [License: P1900, #1687 - 11/28/1900]

12/3/1900 - P1900 - Dodge, G. E. of Summit, Chehalis Co, WA and Robinson, Lulla of Summit, Chehalis Co, WA at Olympia by J. S. McCallum. Affidavit of E. E. Dodge. Witnesses: E. E. Dodge and M. C. Dodge. Filed 12/6/1900 [License: P1900, #1688 - 12/3/1900]

12/8/1900 - P1900 - Anderson, I. E. of Olympia and Erickson, Sophia of Olympia at Olympia by A. G. Darwin, Minister, Baptist Church. Affidavit of Paul Carstenson. Second marriage for groom. Witnesses: Wm. R. Morf and Wm. Westlund, both of Olympia. Filed 12/12/1900 [License: P1900, #1689 - 12/8/1900]

12/16/1900 - P1900 - Bailey, Herbert E. of Aberdeen, WA and Furness, Lillian M. of Lilliwaup, Mason Co at Olympia by A. G. Sawin, Minister, Baptist Church. Affidavit of Robert Dorough. Witnesses: Robert Dorough and Mrs. Robert Dorah, both of Olympia. Filed 12/18/1900 [License: P1900, #1691 - 12/15/1900]

12/22/1900 - P1900 - England, William of Matlock, Mason Co and Felch, Lottie of Matlock, Mason Co at Olympia by J. S. McCallum. Affidavit of A. W. Wisner. Witnesses: [not listed]. Filed 12/24/1900 [License: P1900, #1693 - 12/22/1900]

12/24/1900 - P1900 - Rayton, John of Chehalis, Lewis Co and Barton, Hannah B. of Olympia at Olympia by J. S. McCallum. Affidavit of R. A. Graham. Second marriage for both bride and groom. Witnesses: Fannie McCallum and Mrs. J. S. McCallum. Filed 12/24/1900 [License: P1900, #1692 - 12/22/1900]

12/24/1900 - P1900 - Countryman, W. J. of Olympia and Walker, Emma of Olympia at Olympia by R. C. Glass, Minister, M. E. Church. Affidavit of John Larsen. Second marriage for groom. Witnesses: Mirita Abernathy and Mrs. R. C. Glass. [License: P1900, #1694 - 12/24/1900]

Thurston County Marriages continued

12/24/1900 - P1900 - Utterback, Chas. W. of Olympia and Byers, Maggie E. of Olympia at Olympia by R. M. Hayes, Minister. Affidavit of C. E. Byers. Second marriage for groom. Witnesses: Mrs. Lucy Byers and Mrs. Alice Lamp. Filed 12/26/1900 [License: P1900, #1699 - 12/24/1900]

12/25/1900 - P1900 - Delavan, Fred L. of Tumwater and Keillor, Freda M. of Tumwater at Tumwater by R. C. Glass, Minister, M. E. Church. Affidavit of Walter Randall. Witnesses: Wm. M. Heath and Walter Randall. [License: P1900, #1695 - 12/24/1900]

12/25/1900 - P1900 - Dickieser, Joseph of Olympia and Oldman, Alice E. of Matlock, Mason Co, WA at Olympia by R. M. Hayes, Minister. Affidavit of Geo. Oldman. Witnesses: B. P. Dickieser and Marie C. Frisch. Filed 12/26/1900 [License: P1900, #1696 - 12/24/1900]

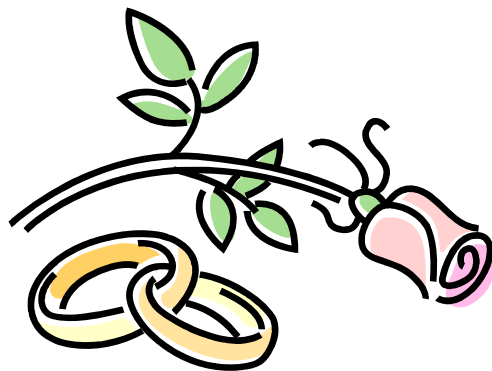
12/25/1900 - P1900 - Brewer, F. R. of Grand Mound and Morris, Gertrude L. of Grand Mound at Grand Mound by A. Anderson, Minister. Affidavit of Chas. A. Billings. Witnesses: Ella French and T. S. Mills. Filed 1/3/1901 [License: P1900, #1697 - 12/24/1900]

12/25/1900 - P1900 - Harrison, Louis B. of Olympia and Cheadle, Annie E. of Olympia at Olympia by A. G. Sawin, Minister, Baptist Church. Affidavit of Mrs. J. J. Cheadle. Witnesses: Thos. Burse and Chas. Taliafero, both of Olympia. Filed 1/2/1901 [License: P1900, #1698 - 12/24/1900]

12/25/1900 - P1900 - Cudney, Alexander of Matlock, WA and Tichnor, Adella of Matlock, WA at Olympia by R. M. Hays, Minister. Affidavit of Wm. England. Second marriage for bride. Witnesses: Wm. England and Mrs. Wm. England. Filed 12/26/1900 [License: P1900, #1700 - 12/25/1900]

12/26/1900 - P1900 - Porter, James A. of Meadow, WA and Jones, Catherine E. of Meadow, WA at Meadow, WA by A. McCash, Elder. Affidavit of C. W. Connell. Witnesses: P. Holdsworth of Traverse City, Michigan and Grace Langworthy of Meadow. Filed 12/28/1900 [License: P1900, #1690 - 12/11/1900]

12/31/1900 - P1900 - Jones, Thomas H. of Victoria, B. C., Canada and Engvik, Amanna of Victoria, B. C., Canada at Olympia by H. L. Badger, Minister. Affidavit of H. L. Badger. Witnesses: Mrs. M. G. Badger and Jennie Young. Filed 12/31/1900 [License: P1900, #1703 - 12/31/1900]



Celebrate the large book donation made by Caroline Hartsuck Wright, the volunteers and staff who worked to make it public, and the 35th Anniversary of the Olympia Genealogical Society (OGS)! Learn more about the library's resources, including databases, books, and the Genealogy Café. Cake and punch will be served.

This event is sponsored by the Olympia Timberland Library and the Olympia Genealogical Society.

Program: Collecting Dead Relatives Or What is Genealogy Anyway??

Genealogy & Open House Celebration

Friday, October 23
6 to 8 p.m. for adults

 **Olympia Genealogical Society**

trl.
Olympia Timberland Library
313 8th Avenue SE; 360-352-0595; www.TRL.org

The following pages from the *Olympia City Directory 1923-24* is continued from the July 2009 OGS Quarterly. This series was begun in July 2008. The original of this book is at the Olympia Timberland Library.

Olympia
Pattern
Works

(E. J. Grenier)

Patterns
for Iron
Brass and
Steel
Castings

ESTIMATES
GIVEN

100 N.
Washington

Telephone
1210

OLYMPIA

54
TALCOTT BROS.

JEWELERS and OPTICIANS

Manufacturers Notary, Lodge and Corporation Seals

424-26 MAIN STREET
Established 1872
OLYMPIA, WASH.

(1923-24) R. L. POLK & CO.'S

Dewey Roy F student r 2312 Columbia

DeWitte Ogot Mrs wtrs Olympia Oyster House h 14-717 Jefferson

DeWitte Walter S (Ogot) carmn OL&PCo h 14-717 Jefferson

DeYarmon Hugh C (Elta M) agt Am Ry Exp h 317 E 7th

Diamond Edd h RD4 \$814

Diamond Geo E (Anna) lab Olympia Door Co h Tumwater

Dibble Emma h RD3 \$384

Dibble Fred J (Lena E) director Dept of Licenses h 1530 Columbia \$420

Dickeiser Jos brkmn OWR&NRy h 1715 Central \$460

Dickeiser Wm lab Modern Plumbing Co h Tumwater

Dickenson John B (Annie) logger h Tumwater

Dickerson Garnett h RD4 \$188

Dickgiser Harry (Nora) farmer h Tumwater RD4 \$444

Dickgiser Lambert lab r Harry Dickgiser \$450

Dickhute A h RD3 \$210

Dickinson A lab TLMCo h Tumwater

Dickinson Clair E r 217 E 8th

Dickinson Mabel A Mrs nurse 217 E 8th r do

Dickson Emma Mrs mach opr Olympia Knitting Mills h 301 Fir

Dickson John (Emma) mech h 301 Fir \$266

Diechart Wm tlr r 308 E 4th

Diemer Frank X h Tumwater \$688

Diesner Max shoemkr 205 E 5th r 25-717 Jefferson \$100

DIETZ ROSE F, Prin-Mgr Olympia Business College, r D Knox Hotel

DIETZ WM E, Sec Olympia Business College, r D Knox Hotel

Digman Geo h end West Bay av \$260

Dill Lillian M (wid Alva G) h 1535 Main \$520

Dill Roy B blksmith Capital City Forging Wks r 1535 Main

Dillaway Winthrop C drainage eng Co Eng r 312 Sheridan av \$530

Dillon Jos H (Eldora) firemn h 1406 Adams \$270

Dineen Jas r 320 E 4th

Dinkleburger I W h RD1 \$478

Dinsmore Chas B (Arminta) driver Capital City Creamery h 1600 Harrison av \$664

Dinsmore Geo R h RD1 \$520

Dinsmore Herbert r 1600 Harrison av

Dinsmore Oliver R (Gladys M) h 116 W Union

Dinsmore Sarah E (wid Alexander) r 315 Sherman av

Dinsmore Vera sten Troy & Yantis r 1600 Harrison av

Dirchler Fred J (Amelia) lab h Johnson's Hill RD2

Disch M A acct Capital Lbr Co r 801 E 5th

Ditmars Harry A (Ethel) slsmn Mottman Merc Co h 225 E 17th \$420

Dittman Amelia G tchr Lincoln Sch h 328 Sherman av

Diven Lou G (wid Clarence L) librarian State Trav Library h 1817 Water \$224

D'Miller Beatrice sten State Ins Dept r W S D'Miller

Olympia City Directory continued

MUNSON for DRUGS**F. G. MUNSON DRUG CO.****126 EAST FOURTH****Telephone 6****OLYMPIA, WASH.****OLYMPIA CITY DIRECTORY (1923-24)**

D'Miller Gladys mach opr Olympia Knitting Mills r W S
D'Miller
D'Miller W S h RD2 \$634
Dobbs Reward W (A Doris) pkr J J Brenner Oyster Co h N 3d
cor Pine
Doble Fred R (Violet) linotyper Wash Recorder Pub Co h 222
E 9th \$580
Dobson J H \$876
Dobyns Harold asst predatory animal insp U S Dept of Agri-
culture 51 Woodcrest Apts
Docherty Earl S (Minnie) driver TLMCo r Roy Strange \$320
Docherty Hugh F (Emily A) driver h 809 E 4th \$190
Dodd H R \$330
Dodd Maria J F r 429 Dayton
Dodd Wm H (Gussie) carp h 909 Glass \$740
Dodds Flavius J (Elizabeth) barber 122 E 5th h 917 Glass \$210
Dodge Benj (Grace) carp Olympia Door Co h 1612 Prospect
\$154
Dodge Elizabeth (wid John) h 1416 Prospect
Dodge Herbert R spl officer Dept of Labor and Industries h 2d
cor Bethel
Dodge John R (Nellie P; Dodge-Lindley Cleaners) h Johnson's
Hill \$750
Dodge J W Mrs \$100
DODGE-LINDLEY CLEANERS (J R Dodge, H R Lindley),
Cleaning and Dyeing 424 East 4th and 518 Main, Tel 188
Doherty Hugh \$316
Doherty Harry (Robbins-Doherty Tire Co) r 1102 E 4th
Doherty Jas (Lizzie; Robbins-Doherty Tire Co) h 1102 E 4th
\$960
Doherty Sadie (McCaughan & Doherty) r 1102 E 4th
Dohm Edw C (Estelle) eng Comnr of Pub Lands h Front cor
Seward
Dohm Hiram city clk h 108 E 19th
Dolan John E (Alma) tallymn Capital Lbr Co h Tumwater
Dolan Olivia \$260
Dole E E h RD2 \$300
Dolphin Anthony W legal asst Dept of Pub Wks r 206 Union
Domine Burt (Helen) lab h W 4th end Decatur av
Donaldson N A h RD3 \$1020
Donavan Minnie J dep clk Supreme Court r 503 Washington
Donaldson Erroll V (Celia A) driver B C Crabill h 1209 Frank-
lin
Donges Chris (Mollie) carp Dept of Business Control h 910
E 4th
Donges F H house mgr Elks Club r 607 Main
Donges Gus \$260
Donnelly Frank V insp r 208 E 13th
Donnelly Harriett C sten Supreme Court h RD2
Donnelly J A dairy h RD2 \$2316
Donnett Chas W (Addie L; Creamery Cafe) h 106 W 6th
Donoghue Ray M lab Olympia Veneer Co h 1405 E 3d

**SPECIAL
MAILING
LISTS**

**Of
individuals
not in
Business
Classified
to meet the
require-
ments
of any line
of Business**

**LIST and
SERVICE
Department**

**R. L.
POLK
& CO.
Inc.**

**71
Columbia
Street**

**SEATTLE,
U. S. A.**

Olympia City Directory continued

BARNES GARAGE
 Gas, Oils, Tires, Accessories
 and Vulcanizing

OLYMPIA, WASH.

ROSE A. DIETZ
Principal

OLYMPIA

W. E. DIETZ
Secretary

BUSINESS COLLEGE

Shorthand—Typewriting—Bookkeeping—Civil Service
 Kneeland Bldg., Fourth and Main Sts. Phone 210 Olympia, Wash.

(1923-24) R. L. POLK & CO.'S

FRED BARNES, Prop.
 DISTRIBUTORS MILLER TIRES—USED CARS SOLD
 Phone 335

FIFTH and COLUMBIA STS.

Dooley Ralph E (Avis V) shingle pkr State Capital Shingle Co h 1008 Page

Doragh Emma L (wid Robt) h 1016 Main \$650

Dorland Ida B Mrs clk Harris Dry Gds Co h 101 Rogers av

Dorland Sim D (Ida B) dyer 615 Main h 101 Rogers av

Dorman H S \$644

Dorse H W h RD4 \$594

Dorsey Benj F (Bersheba) firemn Hotel Olympian h 201 E 5th

Dorsey Chas H (Rena M) carp h 1307 Seward av

Dorsey Jos r 320 E 4th

Dorsey J Guy r 210 E 5th

Dorsey Lloyd T (Adeline) firemn h 1215 Conger av

Dotsch Raymond F lawyer Walker bldg r YMCA

Douge Edgar lab r J E Wright

Douge E W \$230

Douge Martha (wid Nathan) r J E Wright

Douglas Chas R (Edith) barber Wold & Werner h 902 E 6th

Douglas Stephen A (Juliet) sten Dept of Pub Wks h 3 Claremont Annex

Douglass Arthur J (Jessie A) pntr h E 6th cor Stewart RD2 \$250

Doughman W R (Myrtle; The Midway) h 616 E 4th \$954

Dow C L dairy h RD3 \$2298

Dow Fred W teller Olympia Natl Bank r 1203 Dickinson av

Downen Jas (Mae) driver Thompson-Smith Transportation Co h 918 Franklin

Dowley C H \$450

Downie Danl (Geneva) millwkr h 1211 Hays av

Downie D sawyer Panama Lbr & Shingle Co r 215 Rogers av

Downie R millwkr Panama Lbr & Shingle Co r 215 Rogers

Downie Wm J (Ida C) millwkr Panama Lbr & Shingle Co h 215 Rogers av

Downs W W sten Dept of Pub Wks h RD3

DRAHAM GEO W (Edith K; G W Draham & Son), Mayor of Olympia, h 208 S Sherman Av

DRAHAM G W & SON (G W and W H Draham), Insurance, Real Estate and Loans 101 W 4th, Tel 498 (See top edge)

Draham Jas h RD1 \$1790

DRAHAM WALTER H (Katherine; G W Draham & Son), h 201 Capital Apts, Tel 1185-R

Drake Chas J (Annie S) millwkr HMcCLCo h 1010 Columbia

Drake Milo D (Myra E; Olympia Pattern Works) h 410 Sheridan av

Drehmel F W h RD3 \$594

Drewry A D h RD5 \$1594

Drewry C O h RD5 \$848

Drewry D A h RD5 \$224

Drewry E V h RD5 \$1594

Drillen Isiah rprmn City Water Dept h 1112 E 6th \$390

Drolsom Halver h RD4 \$58

City Directory continued

OLYMPIA OPTICAL CO.

(RUTH E. JOENSON)

Have Your Eyes Examined—Lenses Duplicated

619 MAIN STREET Telephone 1195 OLYMPIA, WASH.

OLYMPIA CITY DIRECTORY (1923-24)

Drury Ralph M (Mabel E) metermn OLT&PCo h 428 Dayton \$292

DUBUQUE FIRE & MARINE INS CO OF DUBUQUE IA,

Leach Insurance Agency Agts, 5th nw cor Washington

Duby Millard F (Clara E) farmer h 217 E 8th \$374

Duby Wm (Hazel) driver h 1004 Puget

Dufault Chas L (Amanda E) right of way agt State Highway Dept h 116 E 21st \$1384

Duffin Chas W clk Dept of Labor and Industries r 1304 Franklin av

Duggan John logger r 206 W 4th

Duggins Edw lab r C A Wilcher

Duggins Oliver lab r C A Wilcher

Duke Frances E student r J P Duke

Duke John P (Leonaha M) supvr of banking Dept of Taxation and Examination h 26th cor Main

Dull A R rpr J E Kelly h Chambers Prairie

Dunbar Clara (wid R O) h 818 Glass

Dunbar Fredk J h Puget Route \$240

Dunbar John H (Marie R) asst Attorney General h 234 E 17th \$440

Dunbar Ruth r 818 Glass

Duncan Will M (Almeda) chief clk Comnr of Public Lands h 206 Rogers av \$414

Dunham Grace K clk State Treasurer r 613 Adams

Dunham Marjorie E clk Rabeck Music Co r 613 Adams

Dunham Orville M (Mary K) h 613 Adams \$350

Dunham Wm H (Maude L) co club agt h 708 Main

Dunkelberger Harold \$260

Dunn Fred (Gertrude) eng h H-316 Washington

Dunn J Pierce (Emeline; Dunn Tire Co) h 204 E 10th

Dunn Levi P (Ethel) driver h Tumwater

Dunn Phillip (Katie) millwkr Capital Lbr Co h Tumwater

Dunn Tire Co (J Pierce Dunn) 526 Main

Dupea Frank L mgr Olympia Machine & Engineering Co r 810 Main

Durham Jas (Louise) agt h 701 Dayton

Durkee Wm A h 1341 E 4th \$204

Durr Chas G \$124

Durward L C \$198

Dutcher H C h RD1 \$266

Dutton Milton h Thomas st West Side

Duval Edw (Violetta) lab h 105 Sheridan av

Duval F millwkr Panama Lbr & Shingle Co r 1110 West Bay av

Duval L E \$1290

Duval Oliver h RD1 \$240

Duval Oscar C (Drusie) carp h 101 Franklin

Duxbury Eugene L (Hattie) janitor Washington Sch h 720 Central \$480

Duxbury Maynard C student r 720 Central

Dwyer Edw J printer r 223 Sherman av

57

Good Eats Cafe

"It's the Coffee"

We Specialize

in

STEAKS

and

CHOPS

and

OLYMPIA OYSTERS

"Quality and Service" is Our Motto

PRIVATE BOOTHS**119 E. 4th****Telephone 995****OLYMPIA**

Olympia City Directory continued

MODERN PLUMBING COMPANY

PLUMBING, HEATING AND REPAIRING

TELEPHONE 544

412 East Fourth St.

OLYMPIA, WASHINGTON

OLYMPIA DOOR CO.

Established 1887—Incorporated 1897

Manufacturers of Pacific Coast Timber Products

OLYMPIA

(1923-24) R. L. POLK & CO.'S

- Dwyer Elias (Mary C) h 223 Sherman av
- Dye Ada r 420 W 4th
- Dye Blanche Mrs ctr Olympia Knitting Mills h 420 W 4th
- Dye Geo L (Ada) logger r 1010 E 2d
- Dye Mott H (May) foremn Buchanan Lbr Co h E Bowman av at Gulch
- Dye Richd (Blanche) carp h 420 W 4th
- Dyer Mary V (wid Geo T) r 428 Dayton \$134
- Eads Transfer (Wm G Eads) 517 Columbia
- Eads Wm G (Edith; Eads Transfer) h 1008 E 2d \$3594
- EAGLE STAR & BRITISH DOMINIONS FIRE INS CO,**
Insurance Service Corporation Agts, 222 E 4th
Eagles Hall 315 Main
- EAST SIDE TRADING CO** (David Gammell), Staple Groceries, Hay, Seeds, Flour, Feed, Hardware, Notions and Dry Goods E 4th and Fairview, Tel 284
- Eastman Bruce A news agt r 130 W 19th \$394
- Eastman Emma J (wid Chas F) h 130 W 19th \$180
- Eaton Cornelia dom 306 Maple Park
- Eaton Hugh eng h 4-715 E 4th
- Eaton Mary F bkpr r 4-715 E 4th
- Eaton Phil K x-ray opr Dept of Labor and Industries r Knox Hotel
- Eaton Sally F (wid Chas S) h 516 East Bay av \$1020
- Ehbutt Harold D (Gertrude) pntr h 1005 E 8th \$170
- Eby David B Rev (Hannah) pastor Church of the Brethern h E 6th nr Fairview \$280
- Eby Verna nurse r D B Eby
- Ecker Alfred R farmer h RD5 \$446
- Ecker Anthony M (Dora M) carrier PO h 1209 E 10th
- EDISON PHONOGRAPHS AND RECORDS** (Rabeck Music Co), 409 E 4th (See front edge)
- Eddington Floyd B pressmn State Printing Office r 811 E 3d
- Eddington Miles (Laura) janitor Pac Tel & Tel Co h 811 E 3d \$136
- Edgbert Chas (Millie) lab h Conger av \$510
- Edgbert Florence G cook St Peter's Hosp r 1711 Brawne av
- Edgbert Frank W (Delia V) h 1711 Brawne av
- Edgbert Frank W jr student r 1711 Brawne av \$390
- Edgbert Jas logger r 1612 Prospect
- Edgbert J Finley h W Cushing nr Harrison
- Edmonds Robt H Rev (Martha A) pastor Westminister United Presbyterian Ch h 411 Jefferson \$524
- Edwards Andw J r 249 Fremont
- Edwards Wm E (Mary E) mgr Budd Ranch Store restr 436 Washington h RD2
- Eells Chester \$964
- Egbert Curtis (Dana S) dentist 201 Columbia bldg h 113 W 14th \$2178
- Eich Charlotte r 912 E 3d
- Eich Chas (Eva) millwkr Capital Lbr Co h 912 E 3d
- Eich Louis millwkr Capital Lbr Co r 912 E 3d

Olympia City Directory cont.

The Leach Insurance Agency

GENERAL INSURANCE

Fifth, N. W. Cor. Washington Phone 149 Olympia, Wash.

OLYMPIA CITY DIRECTORY (1923-24)

Eich Thos B (Flora M) meatctr M A Fauver h 801 E 5th \$264
 Eich Thos B jr foremn Capital Lbr Co r 801 E 5th
 Ekrem Geo S (Ada T; G S Ekrem Shoe Co) h 306 Union \$3000
 Ekrem G S Shoe Co (G S Ekrem) 423 Main
 Ekstadt Frank O millwright h Tumwater
 Elberson John D slsmn J W Johnson r 3d and San Francisco
 Elder Geo B (Mamie) clk Bowen & Lepper h RD2
 Elderkin Fred R (Mary V) carp h 803 E 4th
 Eldridge Vernon (Lois) mech Taffee-Lewiston Co h South Bay
 rd Puget Route
 Elks Club 607 Main
 Elliott Bert A h RD5 \$424
 Elliott Edw (Frances C) janitor State House h 517 Davis \$150
 Elliott Ernest R. (Della) millwkr Olympia Shingle Co h 1812
 E 5th \$96
 Elliott E H \$154
 Elliott Wm h RD3 \$472
 Ellis Chas B lab HMCCo h Tumwater \$240
 Ellis Francis M h RD3 \$206
 Ellis Harry C driver Union Oil Co h Boulevard and 9th RD2
 \$240
 Ellis Henry C (Rachel J) r Harry C Ellis
 Ellis Herman \$650
 Ellis John C (Eunice) real est 524 Main h 200 W 20th \$530
 Ellis Leda (wid Wm D) smstrs h 18-715 E 4th \$220
 Ellis Leola Mrs cook h Tumwater
 Ellison Herbt R (Vena L) logger h 1032 Cherry
 Ellsworth Harley L (Florence) h 127 W 19th \$1160
 Elmer Virgil B (Minnie) restr 617 E 4th h do
 Elswick America (wid Oliver) h N Cushing nr Harrison
 Elwell Miriam S sten Capital Savings & Loan Assn r. 315 E. 7th
 Elwell Otto R (Bess) dftsmn State Highway Dept h 127 E 17th
 Elwell Robt W (Eva E) pres-mgr Thurston County Abstract
 Co h 315 E 7th \$670
 Ely Clarence V (Anna) carp h 1502 Cherry \$350
 Emmick Jacob farmer h E Yew cor 13th \$148
EMPORIUM THE (A A Gottfeld), Clothing, Men's Furnish-
ings, Hats and Shoes 211 E 4th, Tel 434
 Endicott Cynthia E (wid Richd) h 105 Sheridan av
 Endicott Jas T (Emma) police h 1115 E 8th \$410
 Engbert Ida nurse St Peter's Hosp r do
 Engdahl Chas C (Minnie) lab Olympia Veneer Co h 1120 East
 Bay av
 Engel Helen V sten U S Forest Service r S H Engel
 Engel Isadore r S H Engel
 Engel Saml H (Matilda) farmer h E 4th extd RD2 \$970
 Engelman Walter \$152
 England Chas (Adela) lab r 1012 Prospect
ENGLISH AMERICAN UNDERWRITERS, Leach Insurance
 Agency Agts, 5th nw cor Washington
 English Peter r 308 Plum
 Engwall Verner lab Olympia Veneer Co r 505 Jefferson

Advertising

in the

**CITY
Directory**

 ||
PAYS

 ||
**90
PER
CENT**

 of our
 patrons
 renew their
 advertising
 with little
 if any
 solicitation
 About
 as much
 as says
 they're
 satisfied,
 doesn't it?



**OLYMPIA GENEALOGICAL SOCIETY
APPLICATION FOR MEMBERSHIP**

Name: _____

Maiden Surname: _____ Spouse's Name: _____

Address: _____

City: _____ State: _____ Zip+4: _____

Telephone: (_____) _____

E-mail: _____

Do you need a ride to the meetings? _____

Single Membership \$20.00 per year (Membership year is from Sep 1 to Aug 31)

Family (one newsletter) \$25.00 per year

New Membership _____ Renewal _____ Reinstatement _____

Please enclose S.A.S.E. if you want a receipt and membership card mailed.

<p>Send this form and check (payable to OGS) to:</p>	<p>Olympia Genealogical Society P.O. Box 1313 Olympia, WA 98507-1313</p>
--	---

EXCHANGE NOTES

by
Jean Laws

The publications mentioned are sent to our society in exchange for our Quarterly. They are filed alphabetically by state and county in the vertical files in the genealogical section of the Olympia Timberland Library. Some of them are eventually bound and placed with bound periodicals in the genealogical section or in storage at the Montesano Library. Anything in storage can be ordered at the reference desk to be sent to your library for your use.

Whitman Co G S June-July 2009 If you've enjoyed an old fashioned circus in days gone by, you'll enjoy an article on W W Cole's Circus and its performance in Colfax on July 28, 1884. This circus is still in existence and celebrating their 125th anniversary . My grandparents, Henry Morris and Cora Fletcher, were teens in Whitman Co that year and I wonder if they attended.?

Puget Sound G S June 2009 I especially enjoyed the article "On the Beach During WW II and interested in the differences and similarities with my experiences in eastern Wash. We didn't have beach patrols etc. but did have rationing, victory gardens and much more.

Chelan Valley G S May 2009. Good article on Headstone Rubbing Techniques. It points out that using the right techniques and material you should be able to have good results. A list of materials and techniques is included along with a short history.

Kern Co Cal Mar 2009 I know some of you are descendants of witches. Here is a lengthy story of Rebecca Blake Eames 1641-1721 written by 2 of her descendants, and is typical of many other stories. Besides much info on her family, there is the story of the Salem Witch Trial Hysteria of 1692. In Rebecca's case, though found guilty and condemned, and spending 7 months in prison, she was freed and lived to 82.

Same June 2009. Informative article on context for your ancestor's lives when writing your ancestor's stories. That means we need to research the world in which they lived and places them within the geographical, historical, civil, social and religious frameworks of their lives. The author gives many examples including the Witch of Boxford in the previous issue.

Minnesota Genealogy. Spring 2009 from Minn. G S .A thoughtful article is on great grandparents: May We Have Enough wisdom to Learn from their experiences. This society is also publishing informative articles on their member' great grandparents.

Northeast Wash G S July 2009 This is the 150th anniversary of the establishment of Fort Colville and this society was given the task of finding descendants of the 9 soldiers and 1 civilian that was there. The researchers were working forwards instead of backwards and this article gives tips on how this was accomplished. They were able to contact about 20 descendants and 11 of them attended the anniversary event and were very pleased. The society is also doing a very detailed timeline on Stevens Co. It is full of local info and people and would make a good project for our society.

Texarkana USA G S Spring and summer 2009. At their November meeting the speaker was Col Jim Bowie enacted by Larry Parker. Larry told of Col. Bowie's family and history and his reputation as a knife fighter. His famous knife was really designed by his brother Rezin. A pedigree chart of Jim Bowie and a long history of this famous man follows until his death in 1836 at the Alamo.

Tama Co Ia. Historical Soc newsletter July 2009. A helpful article on Collateral and Cluster genealogy which is researching relatives and neighbors of your ancestors. It lists 8 benefits of doing this type of research. Also another list of job descriptions you may find in your research. i.e. : Ackerman--ploughman or ox herder; Ambler--officer of royal stables who broke in horses; Ale tunner--works in brewery to fill ale casks; Aurifaber--goldsmith; Aproneer--London shopkeeper.

Exchange Notes—continued

Milwaukee Co G S Aug 2009 A perfect example of "you never know what you'll find in genealogical periodicals. Here is an article by a retired Milwaukee teacher and librarian on Mexican research. Her father was one of the first Mexicans to come to Milwaukee from Mexico in the 1920's. She has become an expert in Mexican research and has much to share.

S. King Co G S July/Aug 2009. I enjoyed an article called Well Behaved Women. These are women who have made a place in history and often behaved beyond the norm and were unacceptable for their time. As examples, Anne Hutchinson was expelled from Mass for questioning the Puritan Church and helped found the Baptist Church in R I. Mary Barrett Dyer defied the laws of Massachusetts by professing Quakerism, was jailed, tried and hanged. The article discusses these and the ordinary women who did behave but had a big impact on their families. This was especially true of those who came west and a bibliography is included on women and the westward movement.

Fiske Gen Foundation Newsletter June 2009 Besides much information on what can be found at this library, there is a good article on using city directories, especially online. Another is on trying a Genealogy Wiki. There is much to be found at this Seattle library.

Crawford Co G S of SE Kansas Apr-May-June 2009 Continuation of Kansas Mining accidents 1884-1916--this interesting article concludes with several pages of mining terms and main causes of these accidents. Most common cause of fatal ones were roof falling in, of non-fatal, from falling rock.

Grays Harbor G S July-Sep 2009 Ever thought that some states are harder to research than others? The best and worst states rated by Family Tree Magazine are : worst Mississippi, and best is Massachusetts. Washington ranks 2nd of the best mainly due to our digitalized records from the state archives and the large number of resources in Seattle including the National Archives record Center --Pacific Alaska region.

Willamette Valley G S Summer 2009 A continuation from the previous article on "Fifty years of Marian Co Trademarks" These include pictures or drawings and background information on each company. Also "Doctors in Marian County as of June 1880" This information was taken from the 1880 census so includes the Doctor and his family and boarders. It even listed one woman which surprised me. Same Newsletter, Aug. 2009. This issue contains a summary of genealogy resources available at the Oregon State Library, Salem. This would be great help if you plan on researching there. The better your preparation for a research trip, the better your results!

Researcher-Tacoma Pierce Co G S Summer 2009. This is their annual publication so it is huge and full of interesting articles. It is also their 40th anniversary so take a look. Quilts, wars, pioneers, great discoveries, humor, children's books, childhood memories, burial vault occupants--all are featured.

Hoosier Genealogy from Ind. Historical Soc Spring, summer 2009. After hearing Hank Jones at our spring seminar, we are all aware of uncanny coincidences during our research. The search for Samuel Huddleston , who served in the Union army from Indiana is full of examples of serendipity. Also the article on researching the Indiana's Women's Club records should be of interest.

Oklahoma G S 2009. Vol 54 # 2. If you dig Oklahoma or any Naval or Military history, you will enjoy the article on the USS Oklahoma Association Collection. The ship was called Oke and the crew Okies and many adventures are related here.

Exchange Notes—continued

Rogue Valley G S May 2009 If you like mysteries, you'll enjoy the Mystery of the Hatbox and the Suitcase: Part 1. It began with a donated hatbox and suitcase to this society. Trying to track down present day descendants of the Goshert family of Lancaster County, Pa. led to many situations.

Sno-Isle G S 2nd quarter 2009 Much of this issue is about Lynnwood as it evolved from a forest to a city. The Puget Mill Co was founded by Capt Talbot and Cyrus Walker in 1874. Later, Alderwood Manor was built on this land. Many pictures accompany this story.

Cornerstone G S Waynesburg, Pa. Aug 2009. This issue consists of pages from past Cornerstone Clues . Much information can be found by rereading these or if you have not had access to them previously and are researching the Greene, Pennsylvania area. A unique idea!

The Olympia Genealogical Society will give a beginning genealogy research class including steps for research, places to gather information and ways to document your family history.

Registration begins Saturday, October 10 at the reference desk, or call 352-0595. Please bring a lunch and a pen.

Beginning Genealogy Workshop

Saturday, October 24
10 a.m.–4 p.m. for adults



trl.

Olympia Timberland Library
313 8th Avenue SE; 360-352-0595; www.TRL.org

OGS PUBLICATIONS FOR SALE

1910 CENSUS INDEX, THURSTON COUNTY, WASHINGTON	\$15.00
1889 CENSUS, THURSTON COUNTY WASHINGTON TERRITORY	\$15.00
THURSTON COUNTY WASHINGTON BIRTH RECORDS, 1891-1907	\$10.00
NEWSPAPER GENEALOGICAL ABSTRACTS, 1891-1907	\$20.00
OGS SURNAME INDEX, 1999	\$23.00

Postage and handling for first book is \$5.00. Additional books to the same address, are \$2.00 each. Send orders to: Olympia Genealogical Society

PO Box 1313
Olympia, WA 98507-1313

DEADLINE FOR THE JANUARY ISSUE IS DECEMBER 15, 2009.

THANK YOU

OLYMPIA GENEALOGICAL SOCIETY
PO BOX 1313
OLYMPIA, WA 98507-1313

Non-Profit Org.
U.S. Postage
PAID
Olympia WA
Permit No. 148